



PORSCHE



The new Macan

Choose Thrilling



European models shown. Some options may not be available in the U.S. Some items of equipment are available as extra-cost options only. For information on standard and optional equipment, please consult your authorized Porsche dealer. All information regarding construction, features, design, performance, dimensions, weight, fuel consumption and running costs is correct to the best of our knowledge at the time of going to print (01/2021). Porsche reserves the right to alter specifications, equipment and delivery scopes without prior notice. Colors may differ from those illustrated. Errors and omissions accepted.

“In the beginning I looked around and could not find quite the car I dreamed of. So I decided to build it myself.”

Ferry Porsche



The dream of the sports car.

A big dream has to be fought for. And so does a bold vision. The next victory? Rarely will it simply fall into our lap. Often, though, there are innate factors we must first fight against: resistance, conventions, and rigid patterns of thinking.

Whatever we fight for or against, nothing is achieved without passion, grit and determination. Ferry Porsche gave everything for the sports car of his dreams. His dream came true. Not because he hesitated, waited or got lucky. Because he went that extra mile.

This attitude, this fighting spirit, is in every Porsche that we've created since 1948. It's there in every detail and in every race we've won. It's also found in every idea. And in our engineers. Who continually surpass themselves. To achieve the one second that makes the difference between triumph and tears. For the 'Dr. Ing.' in our company name, and to reinvigorate Fascination Sportscar time and time again.

To us, it's never been about extra horsepower alone, but about more ideas per PS. It's about engines that are more efficient, not bigger. It's about a design that follows principles, not trends. It's about sports cars that can be driven day in, day out.

It's only when all these things come together that we can talk of Intelligent Performance – the core of the Porsche brand, and of its future. This is what we are fighting for. Just as we did on day one. For a dream that will forever be in our heart.



- 06 Choose Thrilling
- 08 The Macan concept
- 12 Design
- 24 Drive and chassis
- 40 Porsche Connect
- 50 Comfort and entertainment
- 64 Lighting and assistance systems
- 74 Personalization
- 98 Porsche World
- 100 Technical data

Choose Thrilling.

We are constantly on tour. Because our life is a live concert. We immediately take to the stage and make the air crackle. Our pulse sets the beat. Then the performance starts. The first chord shakes our world. We experience the sound with every fiber of our body, swept along in a torrent of possibilities. Mainstream has never been our thing. We prefer to remain unconventional and feel alive. We never compromise. We always make our own decisions. More adventure. More life. More thrills. And even more acceleration.

Who accompanies us? A sports car that embodies all this and whose stage is the road.



Macan Turbo.



The Macan concept.

We have proven that we will not be dictated to. We do not follow trends but prefer to write our own adventure stories. Such as that of a compact SUV that inextricably combines sportiness, design and everyday practicality: the Macan.

The design – clearly refined. The taillight strip ensures a confident appearance. Typical Porsche DNA: the LED Headlights with four-point daytime running lights and four-point brake lights. Porsche Communication Management (PCM) with its large 10.9-inch touchscreen display stands for pure Infotainment. The new engine generation captivates with the power and sound typical of a sports car. The dynamic performance of the Macan also makes hearts beat faster. Because there's no time to lose before embarking upon your next adventure.



**Trends come and go.
But individual style remains.**



The
Vintage
Dress

LA
Boutique

OPEN

Design.

Exterior.

Every era has its fashions. Its tendencies and trends. Most of these are transitory. But what endures? Shapes that can be easily recognised. That represent an attitude and therefore outlast everything else. We call this Porsche DNA.

With its dynamic overall look, the Macan is unmistakably a sports car. Its redesigned rear appears extremely powerful. Like a bold line under its own signature, the characteristic taillight strip emphasizes the 'PORSCHE' logo. The broad shoulders over the rear wheels are reminiscent of the 911. And a visual demonstration of the road-hugging nature of the Macan.

But there's more: the muscular rear of the Macan GTS enthrals with its sporty, black rear fascia with diffuser. And the Sport Tailpipes in Black of the standard Sport Exhaust System make an audible statement.

The four-point brake lights complement the taillight strip – not only functionally. They also reveal that the Macan bears the Porsche DNA. This is particularly clear in the Macan GTS: here the taillights are additionally tinted.

Its flank is also typically Porsche. From this angle, every muscle appears to be energized – like a predator ready to pounce. Its roof line slopes to the

back like a coupe, thereby creating characteristic sports car contours with a high aerodynamic quality. Our designers call this the Porsche flyline.

Exclusively for the Macan Turbo, the roof spoiler additionally optimizes the aerodynamics, thereby proving that only one trend really matters: your own.



Macan GTS.



Macan GTS.

Adventure fills the air. And the Macan models vigorously absorb this – thanks to the enlarged air intakes in their front end. In the GTS, the SportDesign Package gives the air intake grilles and distinctive airblades a matte black finish. Overall, the front has a wide, sporty appearance that hugs the tarmac. Not only does this look good, this means that the engine is optimally cooled on its way to the next event. And the road is perfectly illuminated – by the standard LED Headlights. These are in black on the Macan GTS – and therefore a touch more impressive.

The side blades also attract attention. They emphasize the dynamic lines and are reminiscent of the 918 Spyder. In the Macan and Macan S, they are finished in Lava Black, as standard. In the Macan GTS in matte black with the 'GTS' logo in High Gloss Black. As an option for all Macan models, the side blades are also available in Carbon Fiber, Brilliant Silver, High Gloss Black or exterior color.

Another design highlight? The wide hood, reminiscent of the legendary Porsche 917, which won countless victories in the early 1970s – at the 24h of Le Mans, for example, where it held the distance record for 39 years.

Still not enough? The Macan Turbo takes to the road with new LED Headlights and four-point daytime running lights including Porsche Dynamic Light System (PDLS), side blades in exterior color and SportDesign Exterior Mirrors. As standard, of course. The 20-inch Macan Turbo wheels in Dark Titanium with highly polished surfaces also catch the eye. The sportiness of the Macan GTS is proven by the 20-inch RS Spyder Design wheels in Satin Black. Even more sporty and exclusive are the optionally available 21-inch 911 Turbo wheels.

But we still haven't had enough, not by a long way. The interior has plenty more room for further highlights.

Interior.

Chase one experience after the other. Of course you want to maintain an overview. The sporty front seats convey the typical Macan feeling: you may be sitting high above the road, but you are still closely connected to it. The seat position is also extremely comfortable for longer journeys. Thanks to the optional 14-way Power Seats with Memory Package or 18-way Adaptive Sport Seats with Memory Package.

As a sports car manufacturer, we understand that a car and its driver must form a single entity. So you do not simply sit in the Macan – but, thanks to its architecture, you are integrated into the vehicle. The three-dimensional arrangement of the controls lends the interior a cockpit character. The instrument cluster with its three-tube design and centrally positioned tachometer lets you keep an eye on

everything. The distance between the standard multifunction steering wheel and the PDK (Porsche Doppelkupplung) gear selector, as well as the main vehicle functions, is extremely short – via the ascending center console, characteristic of sports cars. The ignition is on the left – as is typical of Porsche.

The three-spoke Sport Steering Wheel is inspired by the design of the 918 Spyder – and an established motorsport principle: keep your hands on the wheel. Gear changes are ergonomic, fast and sporty, using the two gearshift paddles.

The Macan has an optionally Heated Multifunction GT Sport Steering Wheel. Its smaller diameter makes it extremely comfortable, especially during sporty driving.

The Macan understands how to set visual accents, with its exclusive interior design. If you opt for the leather package, the seats and dashboard upper section are covered in smooth-finish leather. And thereby underline the already elegant cockpit. In the Macan GTS, the standard material mix of leather and Race-Tex ensures sportiness, grip and elegance. The standard GTS Interior Package including Race-Tex items is complemented by interior trims in Black Brushed Aluminum. If you require further personalization for your Macan, you can choose from other various trims.

If you want to be entertained and know what is happening around you, you will be assisted by one highlight of which we are particularly proud: the 10.9-inch touchscreen display in Porsche Communication Management (PCM). This boasts full-HD resolution and a personalizable start screen. Its intuitive menu provides even faster access to the main functions.



Macan GTS.



Macan Turbo with Leather Interior in Agate Grey and Pebble Grey and further standard equipment.

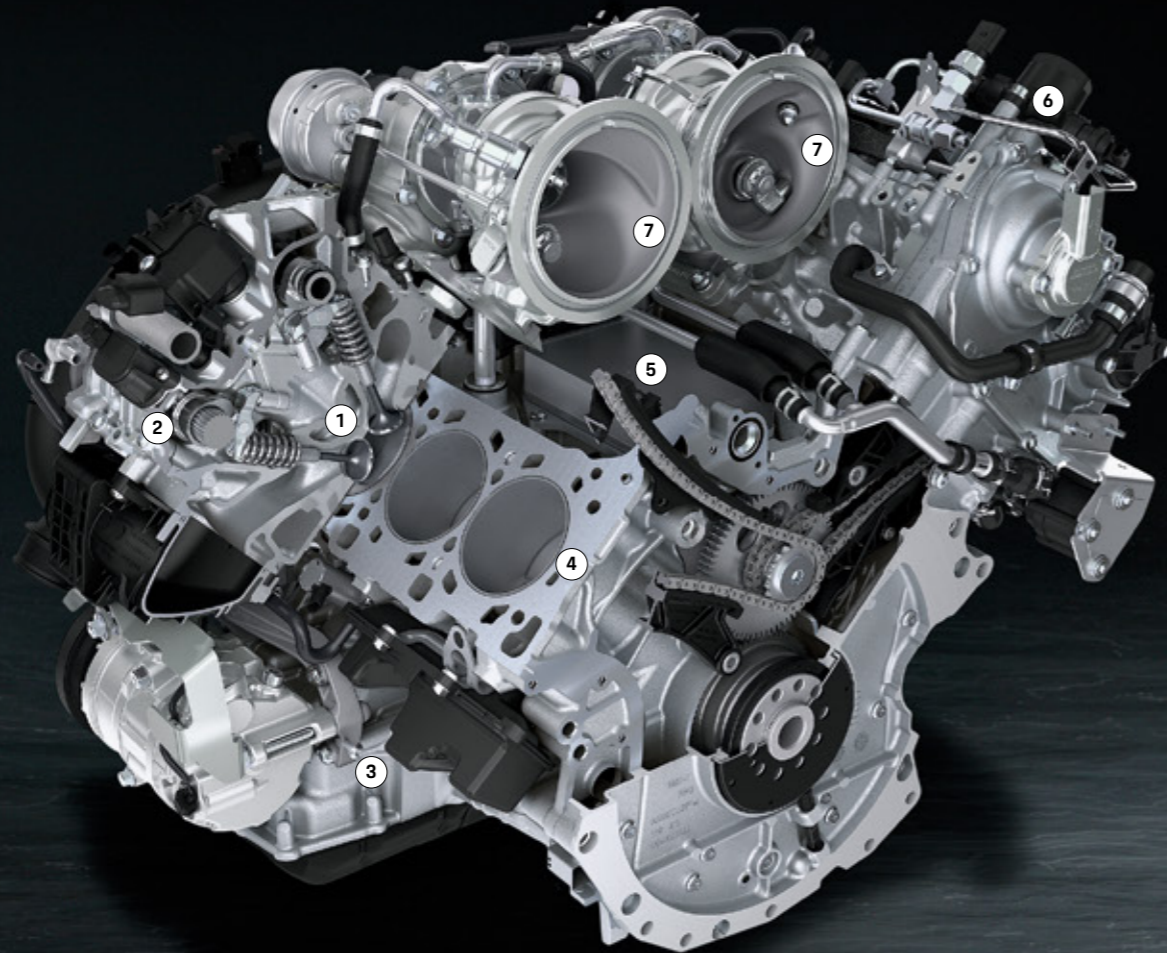


**The most important drive:
repeatedly surpassing yourself.**



Drive and chassis.

- 1 Central injector position of the direct fuel injection (DFI)
- 2 VarioCam Plus
- 3 Variable oil pump
- 4 Weight-optimized aluminum engine block with cast-iron cylinder liners
- 5 Integrated oil/water heat exchanger
- 6 Direct fuel injection (DFI)
- 7 Twin-turbocharger in central turbo layout



2.9-liter twin-turbo V6 engine in the Macan Turbo.

Engines.

The 2.9-liter twin-turbo V6 engine in the Macan Turbo and Macan GTS.

Producing 434 hp, the 2.9-liter twin-turbo V6 engine in the Macan Turbo proves to be extremely powerful. It accelerates to 60 mph in just 4.3/4.1 seconds¹⁾. Top track speed is 167 mph. Maximum torque of 405 lb.ft. is achieved at 1,800–5,600 rpm. The lightweight design not only delivers improved performance. But also reduces emission values. VarioCam Plus ensures improved efficiency and performance: a system that adjusts the camshafts and valve lift. The Macan GTS transfers 375 hp to the road. Top track speed: 162 mph. Acceleration from 0 to 60 mph takes just a sporty 4.7/4.5 seconds¹⁾. Its maximum torque is 383 lb.ft.

Both models have a Sport Exhaust System as standard for an even more emotional engine sound.

The 3.0-liter turbo V6 engine in the Macan S.

The 3.0-liter turbo V6 engine in the Macan S produces a whopping 348 hp and is fitted with a twin-scroll turbocharger between the cylinder banks. Here too, we rely on lightweight construction, delivering more hp per liter. The twin-scroll turbocharger ensures that the exhaust gas fumes are fed to the turbine wheel as separate streams – for an optimized charge cycle. The result: high torque at low engine speeds – 354 lb.ft. at 1,360–4,800 rpm. The engine in the Macan S is also equipped with VarioCam Plus.

The 2.0-liter inline four-cylinder turbo engine in the Macan.

The base model boasts an engine producing 248 hp, high revs and a torque of 273 lb.ft. at 1,600–4,500 rpm. The optimized two-tract exhaust system generates a throaty sound while on the move. Keyword, sound experience: the Sport Exhaust System is available on request. For an even more intense, emotional Porsche sound. After all, the road is a stage.

1) In conjunction with the optional Sport Chrono Package.

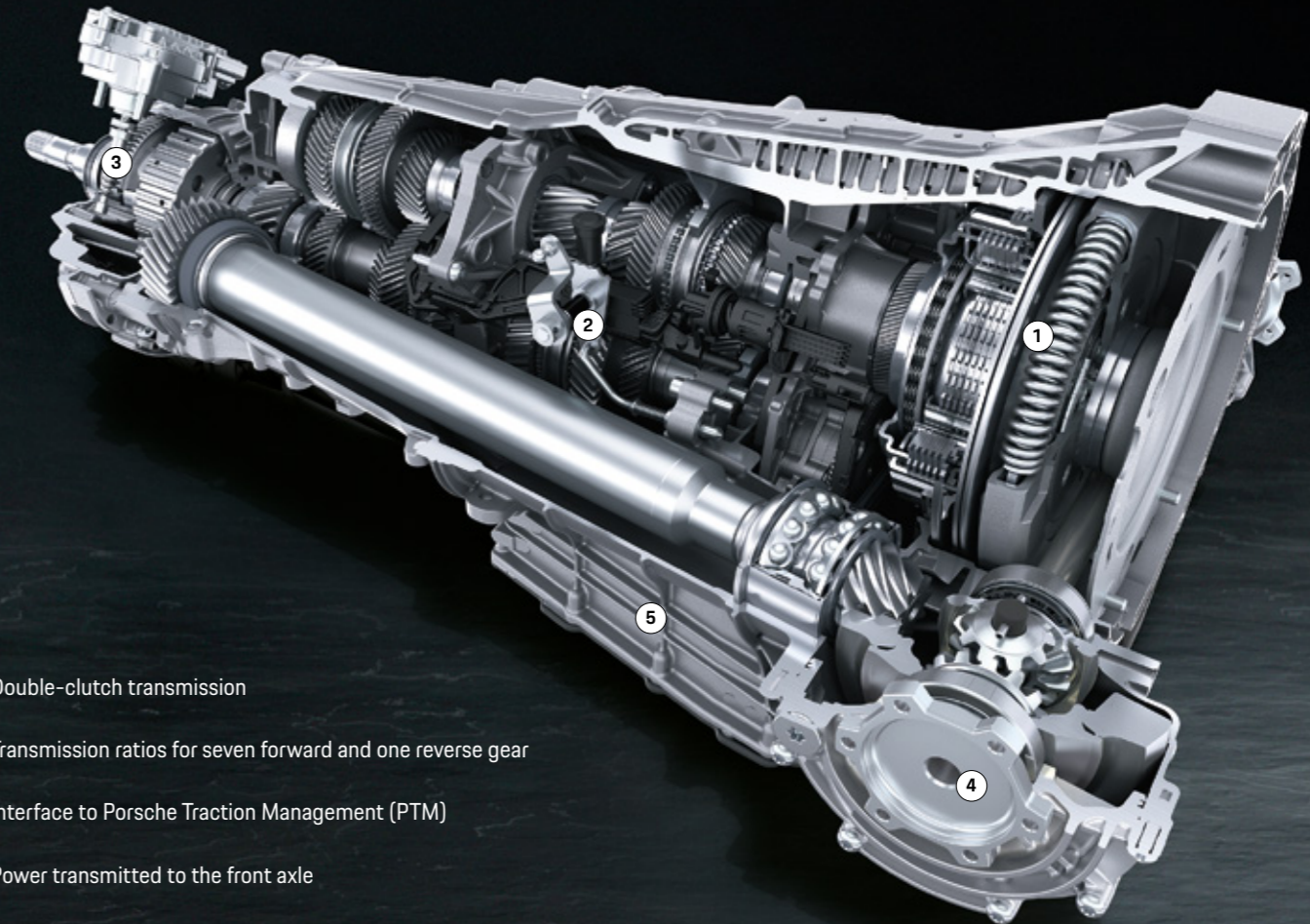


Transmission.

Porsche Doppelkupplung (PDK).

Standard on the Macan models: 7-speed PDK featuring both manual and automatic mode. For extremely fast gear changes with no interruption in the flow of power – as well as excellent driving dynamics and efficiency. The principle of PDK is that whenever a particular gear is engaged, the next gear is already preselected. As a result, gear changes take place within milliseconds. Automatic mode is essentially optimized for fuel economy. This means that PDK is able to offer not only a sporty, agile driving feel, but also increased efficiency. Do you prefer to change gear manually? You can do this either via the two shift paddles on the standard multifunctional Sport Steering Wheel or the PDK gear selector. In conjunction with the optional Sport Chrono Package, the PDK shift times become even shorter in Sport Plus mode and the gear changes even sportier. Launch Control, the racing start function, is also available – for uncompromising driving pleasure.

- 1 Heated Multifunction GT Sport Steering Wheel with steering wheel rim in Race-Tex (also available with Steering Wheel rim in leather) and Sport Chrono Package including mode switch
- 2 Porsche Doppelkupplung (PDK)



- 1 Double-clutch transmission
- 2 Transmission ratios for seven forward and one reverse gear
- 3 Interface to Porsche Traction Management (PTM)
- 4 Power transmitted to the front axle
- 5 Oil sump

Porsche Traction Management (PTM).

The characteristic sports car driving dynamics of the Macan are thanks in part to the Porsche Traction Management (PTM) active all-wheel drive system. This comprises an electronic and map-controlled multi-plate clutch, automatic brake differential (ABD) and anti-slip regulation (ASR). The electronically controlled multi-plate clutch regulates the distribution of drive force between the rear and front axles. Driving conditions are constantly monitored to enable a precise and lightning-quick response to a variety of situations. Sensors continuously collect a range of data, including the rotational speed of all four wheels, the lateral and longitudinal acceleration of the car and

the current steering angle. If, for example, the rear wheels spin under acceleration, a greater proportion of drive force is deflected to the front by a more powerful engagement of the multi-plate clutch. In addition, ASR reduces wheel slip. In corners, the drive force sent to the front wheels is regulated for optimum lateral stability.

In short: PTM transfers the incredible sportiness of the Macan to the road. Behind the wheel, you have the feeling that you are driving a genuine sports car: traction, driving safety, outstanding steering behavior, superior handling and, of course, the excellent dynamics typical of Porsche.

Macan S with optional equipment.





Chassis.

We do not simply drive in order to travel from A to B. We want to feel that our life is dynamic in every single second. Including on the road. And preferably in a sports car.

Adaptive Air Suspension.

For a high level of comfort and tremendous dynamic performance, you have the option of Adaptive Air Suspension including PASM. With this setup, the car is 10 mm (0.39 in.) lower than with the standard steel spring suspension with PASM. In the Macan GTS, the Adaptive Air Suspension including PASM is a further 10 mm (0.39 in.) lower than the Macan S. The effect? An optimum balance between driving comfort and dynamics, as well as a sporty look. The self-levelling function helps to maintain a constant vehicle position. If desired, you can switch the ground clearance to three levels: High Level I, Normal Level and Low Level I. At High Level I, the car is 40 mm (1.57 in.) above Normal Level; at Low Level I, 10 mm (0.39 in.) below it. Loading Level is especially practical: only the rear end lowers 30 mm (1.18 in.) from Normal Level to make it easier to load the car. This function is operated by means of a button in the luggage compartment.

Porsche Active Suspension Management (PASM). PASM is an electronic damping control system that actively and continuously controls the damping force, depending on the road conditions and driving mode, for each individual wheel. For reduced body movements and thus more comfort in all seats. Three modes are available: 'Normal', 'SPORT' and 'SPORT PLUS'.

Sportiness.

Sport Chrono Package including mode switch.

Adventure at the push of a button? A rare occurrence. But not impossible. The Sport Chrono Package provides even sportier tuning of the chassis, engine and transmission. It includes a stopwatch with an analog and digital display and Sport Chrono functions in PCM to view, store and evaluate lap times as well as other driving stats. One new feature is the mode switch with Sport Response button on the steering wheel, derived from the 918 Spyder. There are four settings to choose from: 'Normal', 'Sport' and 'Sport Plus', which allows you to adjust the vehicle more closely to your personal driving style. When Sport mode is active, the Macan responds even more dynamically and directly. While in Sport Plus mode, the engine becomes even more snappy.

PASM results in harder damping and a more direct steering. The optional Adaptive Air Suspension drops to Low Level I. An additional function is Launch Control, which helps to deliver optimum acceleration from a standing start. The stopwatch on the dashboard displays the total driving time, or alternatively the current time.

Porsche Torque Vectoring Plus (PTV Plus).

PTV Plus is a system intended to improve driving dynamics and stability. It works with a variable torque distribution on the rear wheels and an electronically regulated rear differential lock. PTV Plus optimizes steering response and precision by selectively applying brake pressure to the left or right rear wheel. Consequently, a greater amount of drive force is applied to the outside rear wheel, inducing an additional rotational pulse (yaw movement) – making cornering a real experience.

OFF-ROAD button.

Would you like to try roads that aren't actually there? A button on the center console sets your Macan to OFF-ROAD mode. All relevant systems switch to a traction-optimized program for off-road terrain. The optional Adaptive Air Suspension including PASM automatically adjusts to High Level I. In addition, optional Porsche Torque Vectoring Plus (PTV Plus) and Porsche Stability Management (PSM) – integrated as standard – optimally adapt their setup for off-road use, delivering improved driveability and safety. PTM, which is also fitted as standard, provides a fully variable distribution of drive force between the front and rear axles. This delivers a crucial increase in traction.



Macan GTS.



Brakes.

The brakes of all the Macan models are finely-tuned for optimum performance. So it goes without saying that the brake systems are super-sized and adapted to the high power output. At the front, the Macan models are equipped with four-piston aluminum monobloc fixed brake calipers. From the Macan S upwards, six-piston units are fitted. The brake discs are internally vented for consistently high braking performance, even during continuous use. The brake calipers of the Macan are finished in black. Those on the Macan S in Titanium Grey, and on the Macan GTS in red. On the Macan Turbo, they are white – thanks to the highly efficient Porsche Surface Coated Brakes (PSCB).

Porsche Surface Coated Brakes (PSCB).

Braking can also be impressive: the Porsche Surface Coated Brakes (PSCB) combines a cast-iron brake disc with a ceramic coating. The brakes not only boast white brake calipers. Other advantages include improved corrosion resistance of the brake discs, even after a longer period of standstill, and considerably less brake dust formation. The result: the wheels and brake system stay clean for longer. Standard on the Macan Turbo, optional for Macan S and Macan GTS.



- 1 Macan GTS brakes: 360 mm diameter, front, 330 mm rear, brake calipers in red
- 2 Macan Turbo brakes: Porsche Surface Coated Brakes (PSCB), 390 mm diameter, front, 356 mm rear, brake calipers in white
- 3 Macan S brakes: cast-iron brake discs, 360 mm diameter, front, 330 mm rear, brake calipers in Titanium Grey
- 4 Macan brakes: cast-iron brake discs, 345 mm diameter, front, 330 mm rear, brake calipers in black



The best lifestyle magazine:
your own timeline.



Porsche Connect.

Infotainment.

For even more points of contact with your next adventure: Porsche Communication Management (PCM) is your control center for audio, navigation and communication. As part of the navigation and infotainment services, online navigation provides Real-time Traffic Information using mobile data as standard, so that you are always in the right place at the right time. The current PCM generation in the Macan has a 10.9-inch touchscreen display with full-HD resolution.

Another highlight is the customizable start screen that is intuitive to operate.

Of course, every experience also deserves its own soundtrack. While driving, you can enjoy your favorite music via two USB data and charge ports in the front as well as Bluetooth® or even an SD card – or simply listen to the radio. Two USB charge ports are also available in the rear. The standard digital radio makes it possible to receive digital radio broadcasts with better sound quality.



Everyday routine – or time for an adventure? With us, no two days are the same. We do not compromise, preferring to break new ground. Porsche Connect helps you do this. It puts you in the ideal starting position for any road trip – and any of your goals. With useful services and smartphone apps that make your life easier in many ways.

In certain countries, an integrated LTE-enabled SIM card and data package are also available. You can use these to conveniently access the navigation and Infotainment services – except for the music streaming functions. For all music services and to use the in-car WiFi hotspot, a data package is available from the Porsche Connect Store in selected countries. Of course, you can still use your own SIM card if you prefer. This will require a subscription to a mobile network provider of your choice (subject to charge).

Services and apps.

The Porsche Connect services can be simply operated via PCM or My Porsche. With the locator service, you can find destinations of any kind in a matter of seconds. How about an open-air or covered parking space? Or a good restaurant for a catch-up with friends – chosen based on the reviews of other diners? Porsche Voice Pilot, the intelligent voice control system in your Macan, will help you keep an eye on the road and traffic at all times. Via simple interaction, it will take you to your destination, even if you cannot provide a specific address. For example: tell your Porsche that you are hungry and Porsche Voice Pilot will immediately suggest appropriate destinations, such as restaurants or supermarkets in your vicinity.

Porsche Connect offers a variety of services and smartphone apps.

The Porsche Connect app allows you to send destinations to your Porsche before you start your journey. Even your smartphone calendar can be viewed directly on PCM and stored addresses used for navigation. What's more, the Porsche Connect app gives you access to millions of music tracks thanks to its built-in music streaming function.

The Porsche Car Connect app helps you retrieve vehicle data and remotely control selected vehicle functions via your smartphone or Apple Watch®. The optional Porsche Vehicle Tracking System (PVTS) with theft detection sends warning messages to the app.

Go to www.porscheusa.com/connect to learn more about the apps and services available.

- 1 Apps
- 2 Apple CarPlay®
- 3 Calendar
- 4 Locator

Some Online services will be available with a trial period and can then be extended with a subscription. Use of some services may require a separate WiFi package with data capability, thus a separate contract with a wireless service provider may be required. For more information and subscription details please visit www.porsche.com/connect or contact 1-800-Porsche option 3.





Porsche Offroad Precision app¹⁾

Of course, experiences can also be enjoyed away from paved roads. When driving through rough terrain, the Offroad Precision app provides valuable tips. Such as a tutorial, giving you an insight into how to skillfully drive the Macan over hill and dale. Your personal progress will be recorded and evaluated. Improve your performance, share your status with friends or simply challenge one another.

But you can document even more than this. Collect data about routes, times or GPS locations. The Offroad Precision app will use these values to automatically produce route and altitude profiles that you can subsequently view on a map. What is even more impressive than any statistic? Reality. And you can capture it all on video. The clips are recorded either with a smartphone or externally controlled Action Cam²⁾.

1) Only in conjunction with optional compass display on the dashboard.
2) Not included.

Apple CarPlay®.

The standard Wireless Apple CarPlay® enables you to simply connect your iPhone® to your Porsche and have some of your apps shown directly on PCM. With the Siri® voice recognition interface, you can conveniently use your apps on the move while keeping your full concentration on the road.

Smartphone Compartment including Inductive Charging Function.

The optional Smartphone Compartment including Inductive Charging Function allows your smartphone to be much better integrated into the vehicle. A direct connection to the car's external aerial reduces battery consumption, while optimizing reception quality. Simply place your device in the smartphone compartment in the center console, where it can

be conveniently and wirelessly charged – all to the highest technical standard, so that smartphones from various manufacturers can be used, provided these also support the wireless charging function.

My Porsche.

Every Porsche can be configured to your preferences. Porsche Connect is the same. So you can personalise and operate many of the Porsche Connect functions and services according to your needs via My Porsche. Plan your route and transfer it to your Porsche. View the current fuel level and data from your last trip, or check whether the doors and windows are closed. If required, your family and friends also have access to My Porsche and thus to certain functions of your Porsche.

Porsche Connect Store.

Would you like to extend your contract? Or purchase additional Porsche Connect services? Visit the Porsche Connect Store at www.porscheusa.com/connect-store and discover more about what Porsche Connect has to offer. Porsche Connect in all its diversity: learn all about other services, apps and functions online – including availability information for your vehicle and your country. By the way, our portfolio of services is constantly being expanded: visit www.porscheusa.com/connect for all the latest information.

**Outwardly always at full throttle.
Inwardly the epitome of calm.**





Comfort and entertainment.

Comfort.

We perceive experiences with all our senses. Of course, this also includes the feeling we have when driving our sports car.

Touch: the ascending center console and optional GT Sport Steering Wheel contribute to the genuine sports car feeling. While the elegant interior conveys the exclusive impression you would expect of a Porsche, thanks to the optional high-quality leather interior. The optional Ventilated Seats provide a pleasant climate and improved seating comfort. This works by actively ventilating the perforated seat center and backrest.

Sight: the 10.9-inch touchscreen display lets you maintain an overview of everything at all times. And also look ahead: thanks to the standard navigation system with Real-time Traffic Information (RTTI). The windshield is heatable, on request. The glass panels of the optional panoramic roof system create an extremely bright and pleasant lighting effect inside your Macan.

In addition, the front portion slides open or tilts to a raised position. A roll-up blind also shields you from strong sunlight.

Hearing: the Sport Exhaust System generates the powerful sound typical of Porsche – standard on the Macan Turbo and Macan GTS, optional on all other Macan models. For even more audio pleasure, the Burmester® High-End Surround Sound System is available as an option for the Macan models.

Smell: three-zone automatic climate control is fitted as standard. An active carbon filter traps particles, pollen and odors. A new ionization function is available as an option – for improved air quality. Before it reaches the cabin, the air in the automatic climate control system is passed through an ionizer. Germs and other pollutants are reduced.





Seats.

18-way Adaptive Sport Seats with Memory Package.

The Adaptive Sport Seats with Comfort Memory Package combine ultimate seating comfort with sportiness. Offering 18-way electric adjustment, the seats can be optimally adapted to meet your needs in terms of seat height, cushion and backrest angle, seat cushion length, fore/aft adjustment and four-way lumbar support. The steering column is also electrically adjustable. The following functions can be memorised: driver and front passenger seat positions, including lumbar support, as well as steering wheel and exterior mirror positions (comfort memory package). The raised side bolsters on the seat cushions and backrest are electrically adjustable – for dynamic driving. Standard on the Macan Turbo. Optional for all other Macan models.

14-way Power Seats with Memory Package.

Would you like generous seating comfort for both front seats? To supplement the standard comfort seats, the comfort memory package offers additional

adjustment capabilities. Thus, driver and front passenger lumbar support, seat cushion length and steering column can also be adjusted. Optional for all Macan models.

8-way Sport Seats.

Exclusively available in the Macan GTS, the Eight-Way Sport Seats offer a seat feeling typical of a sports car. Eye-catcher: the 'GTS' logos embroidered on the headrests.

Comfort seats.

Comfort seats with electric eight-way adjustment on the driver's side are both ideal for relaxed motoring and practical to operate. Seat height, fore/aft position, cushion angle and backrest adjustment are all adjustable. The passenger seat is adjusted manually. Seat centers in Race-Tex create a sporty accent. Standard on the Macan S and Macan.

1 Adaptive Sport Seats in front (18-way, electric) with comfort memory package including optional Porsche Crest on headrests

2 Comfort seats (front) with eight-way electrical adjustment on the driver's side including optional Leather Package or optional Leather Interior

Sound systems.

Burmester® High-End Surround Sound System.

The Burmester® High-End Surround Sound System, optimally adapted to the Macan, transforms sounds waves into unique sensory stimuli – and music into an exclusive soundscape.

The surround sound system developed by Burmester® – one of the world's most respected manufacturers of high-end audio equipment – is available as an option. The technologies behind the system are from the finest premium home audio systems that Burmester® has to offer. The extravagance is uncompromising, the craftsmanship exquisite, the sound phenomenal. The system owes its excellence to countless details, and one goal: audio perfection.

The figures alone sound impressive: 16 amplifier channels with a total output of more than 1,000 watts, 16 loudspeakers including an active subwoofer with 300-watt class D amplifier, a total diaphragm surface area of more than 2,400cm² and a frequency response of 30Hz to 20kHz. Crossover technology has been carried over almost unmodified from Burmester® high-end home audio products. Analog and digital filters have been optimally defined for their installation location and finely tuned after extensive in-car audio testing. Air-motion transformers (AMT) ensure unmistakably fine, clear and undistorted high-frequency sound reproduction with excellent level stability. The sound enhancer also optimizes the tone of data-compressed music files. Optional for all Macan models.

BOSE® Surround Sound System.

This system has been optimally adapted to the Macan models. A total of 14 loudspeakers, including a subwoofer and center speaker, and 14 amplifier channels with a total output of 665 watts deliver an impressive sound experience. BOSE® SoundTrue enhancement technology delivers even better audio quality and dynamics for compressed file formats such as MP3. It revitalizes digitally compressed music. The result: a clearer and more spatially tangible sound. Standard on the Macan Turbo. Optional for all other Macan models.

Sound Package Plus.

The Sound Package Plus ensures an excellent sound: 10 speakers with 150-watt output. The acoustic pattern in the vehicle interior is optimally adapted to the driver and passengers by the amplifiers integrated into PCM. Standard on the Macan GTS, Macan S and Macan.

1 Burmester® High-End Surround Sound System

2 BOSE® Surround Sound System





Everyday use.

Roof rails.

These high-quality roof rails are available in aluminum or with a High Gloss Black finish. They blend harmoniously into the vehicle's dynamic design. Roof rails are a prerequisite for the optional roof transport system and are only available as a factory-fitted option. Optional for all Macan models.

Roof transport system.

In conjunction with the optional roof rails, this set of lockable cross bars is compatible with all Porsche modules. The load-bearing parts in aluminum are designed to carry a maximum load of 167 pounds. A range of aftermarket modules is available from the Porsche Tequipment accessories program. Optional for all Macan models.

Luggage compartment.

The large luggage compartment of the Macan models is prepared for a wide variety of uses and boasts a capacity of 17.6 cu ft. A storage compartment to the side offers additional space. The rear bench seat folds down with a ratio of 40:20:40. With the seats fully folded, the available capacity increases to 52.9 cu ft. The removable luggage compartment cover provides protection against sunlight and offers additional privacy. The ski bag from Porsche Tequipment can also be removed. It can be used outside of the vehicle for carrying equipment or cleaning.

For loading convenience, the optional Air Suspension enables you to lower the rear end of the vehicle by 30 mm (1.18 in.) using a button in the luggage compartment. The tailgate features a heated glass panel. It opens automatically within five seconds at the push of a button. Its adjustable opening height can be memorised so that it always stops at a safe distance from your garage ceiling, for example.



Trailer hitch without tow ball.

The trailer hitch is approved for a towing capacity of up to 4,409 lbs (braked) and a towing capacity of 1,653 pounds for all Macan models (unbraked). A tongue weight of up to 441 lbs. The towbar system is optionally available for Macan S, Macan GTS, and Macan Turbo.



**In life as on the road:
charisma is everything.**

永興
SHENG YONG XING
ROAST DUCK RESTAURANT



Lighting and
assistance systems.



1



3



5



2



4



6

Headlights.

The Macan and Macan S are fitted with LED Headlights as standard. With their high-quality, delicately shaped LED Headlights including PDLs, the Macan Turbo and Macan GTS offer a perfect combination of design and functionality. Unmistakably Porsche: the four-point daytime running lights in the LED Headlights and the four-point brake lights, also integrated into the LED technology of the taillight strip. The front Headlights are black and taillights are clear in the Macan GTS for an unmistakable look.

Porsche Dynamic Light System (PDLs).

PDLs adapt the light distribution to your speed. The dynamic cornering lights turn the Headlights into the curve, depending on the steering angle and driving speed, while the static cornering lights activate auxiliary Headlights to illuminate narrow curves or turns. Standard on the Macan Turbo and Macan GTS.

Porsche Dynamic Light System Plus (PDLs Plus).

The optionally available LED Headlights including PDLs Plus boast an unmistakable look with their stylistic four-point LED spot lights. The brightness of these Headlights ensures optimum illumination of the road head. As well as the standard dynamic and static cornering lights and speed-sensitive headlight range control, adverse weather function is another essential feature. The Porsche Dynamic Light System Plus (PDLs Plus) also includes: the dynamic high-beam control and Intersection Assistant function based on navigation data, for enhanced illumination of your surroundings. So you see what's going on around you all the sooner.

1 Macan with LED Headlights

2 Macan Turbo with LED Headlights including Porsche Dynamic Light System Plus (PDLs Plus)

3 Macan Turbo: daytime running lights with LED Headlights including Porsche Dynamic Light System Plus (PDLs Plus)

4 Macan Turbo: low-beam with LED Headlights including Porsche Dynamic Light System Plus (PDLs Plus)

5 Macan Turbo: low-beam and cornering lights with LED Headlights including Porsche Dynamic Light System Plus (PDLs Plus)

6 Macan Turbo: high-beam with LED Headlights including Porsche Dynamic Light System Plus (PDLs Plus)

Assistance systems¹⁾.

The better the tuning of everything, the more dynamic, comfortable and efficient you get ahead. Porsche assistance systems are aimed at active, sporty driving, allowing you to enjoy the experience you expect of a Porsche.

Lane Departure Warning.

A camera in the rear-view mirror housing monitors the road in front of the vehicle. If you approach a line and threaten to leave your lane without having indicated, the system issues a warning tone. Lane Departure Warning is standard on the Macan, as is cruise control.

Adaptive Cruise Control (ACC).

This system regulates the speed of your Macan fully independently in line with the distance to the vehicle in front. A radar sensor in the front fascia monitors the area in front of your vehicle. If you approach another vehicle that is travelling slower than your selected cruising speed, the system slows the engine or gently applies the brakes. This continues until the distance that you have pre-set is attained. Your Macan will now maintain its distance to the vehicle in front. If this continues to slow down, adaptive cruise control will keep on reducing your speed, right down to a halt if necessary. When the road ahead is free again, your Macan will accelerate back up to the cruising speed originally set. An impending collision with vehicles is recognized, in accordance with system

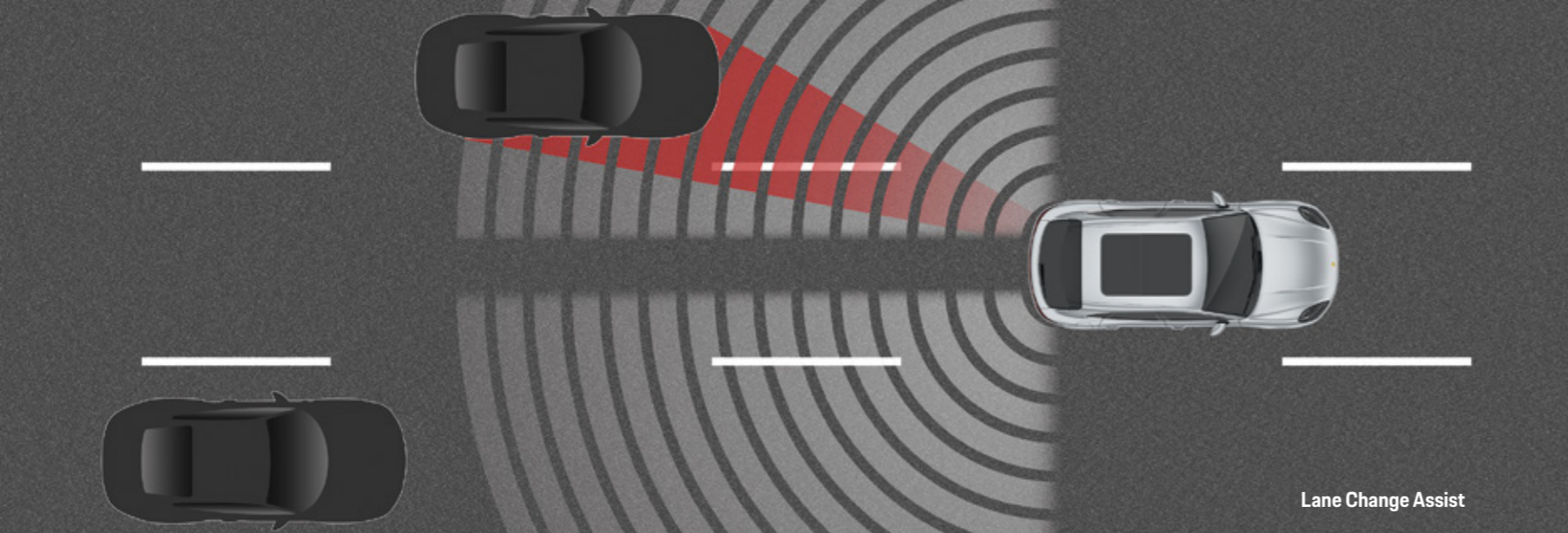
limitations. In this case, the system alerts the driver by an audible and visual warning as well as a jolt of the brakes. It can also intervene in the braking process, if required, to reduce the collision speed or possibly avoid the collision. Optional for all Macan models.

Speed limit indicator.

The speed limit indicator informs you of speed restrictions detected by the integral camera. The information is shown on the instrument cluster screen and PCM touchscreen display. If a road sign is missed – for example due to heavy rain or darkness – the speed limit stored in the navigation module is automatically displayed. The benefit of this function is that it allows you to concentrate better on the road ahead. Optional for all Macan models.



¹⁾ See Important Limitations of Assistance Systems page 108.



Lane Change Assist

Lane Change Assist.

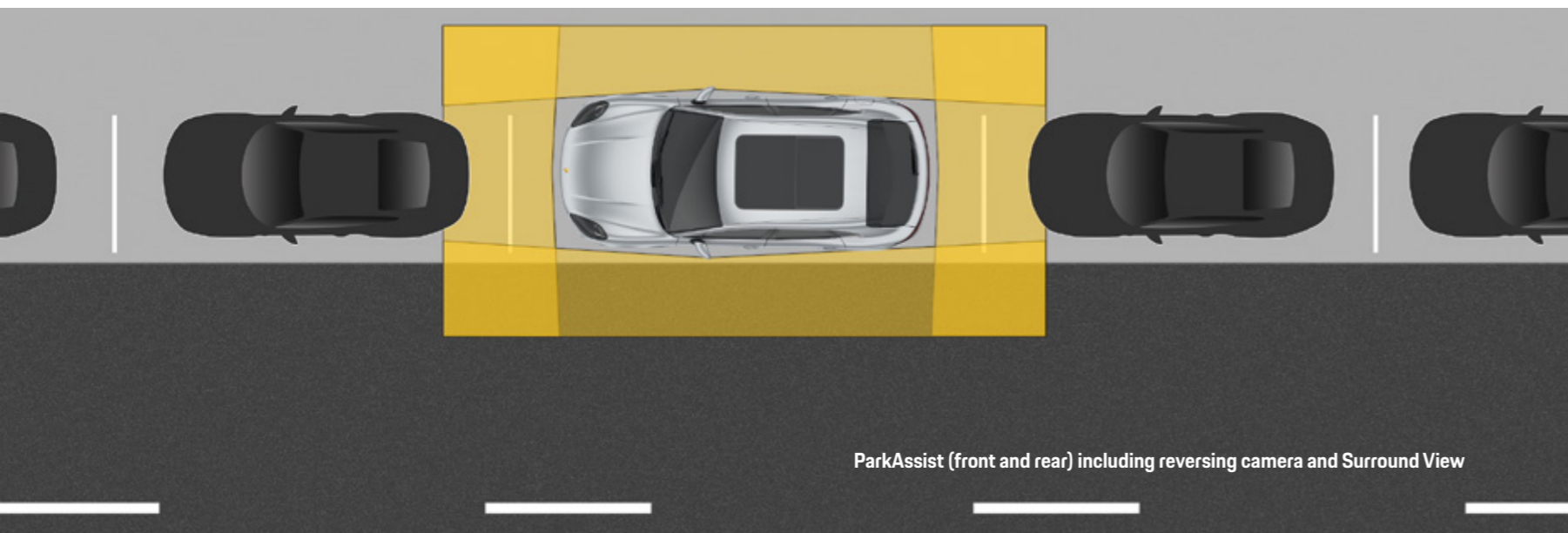
Lane Change Assist monitors the areas behind the vehicle and its blind spots, in accordance with system limitations. Above 18 mph, the system issues a visual warning signal in the exterior mirrors whenever a vehicle quickly approaches your vehicle from behind or enters one of your blind spots. In this way, it improves comfort, particularly on motorways. However, the system does not actively intervene to control the vehicle and can be disabled at any time. When towing a trailer, this function is not available. Optional for all Macan models.

ParkAssist (Front and Rear) incl. Reversing Camera.

ParkAssist warns you of obstacles detected to the front and rear of the vehicle. Its ultrasonic sensors are harmoniously integrated in the front and rear end. The audible alert is supplemented by a visual warning in the central 10.9-inch touchscreen display, showing a schematic representation of the vehicle from a bird's eye perspective. Along with a graphic, depicting your proximity to these obstacles. The reversing camera facilitates precise reverse parking and maneuvering and also assists when hitching a trailer. The camera image and dynamic guidelines on the PCM touchscreen display help to illustrate the predicted course of the vehicle given the current position of the steering wheel. Standard on all Macan models.

Surround View.

With Surround View, four cameras located in the front fascia, exterior mirrors and rear generate an all-round image of the car and its immediate surroundings. In PCM, the driver can choose between a bird's eye view, side view and corner view – noticeable relief on the 10.9-inch touchscreen display of PCM when parking and maneuvering. Optional for all Macan models.



ParkAssist (front and rear) including reversing camera and Surround View



**Better than any template:
your own unique approach.**



Personalization.



**Your inspiration.
Our passion.**

Porsche Exclusive Manufaktur.

Our wealth of experience goes back a long way. Since the very beginning, we at Porsche have been dedicated to realizing customer wishes as part of our special request service. Known until 1986 as the Porsche Sonderwunschprogramm, and then Porsche Exclusive, today we call it Porsche Exclusive Manufaktur.

We love what we do. We love our work. Every seam, every square inch of leather, and every single other fine detail receives the same devotion. We transfer our experience and passion together with your inspiration to the car – and that's how we bring dreams to life. Directly from the factory.

None of this would be possible without originality, enthusiasm and attention to detail, and it all starts with your personal consultation. That's because we always keep one goal in mind: to fulfil your particular wishes and requirements, turning 'a' Porsche into 'your' Porsche.

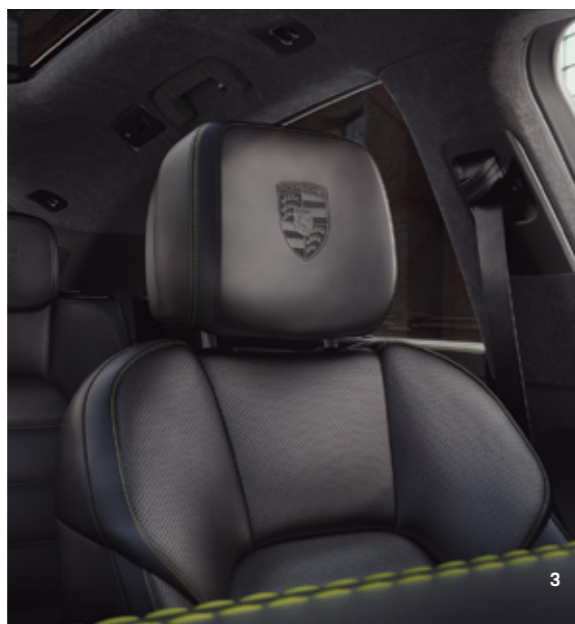
And how do we turn your dreams into reality? With composure and meticulous care, by means of precision handcrafting and the use of exquisite materials such as leather, fine wood or aluminum. Added value is achieved through dedication and finesse. Or to put it another way: the intersecting of sporty performance, comfort, design and your personal taste. A Porsche with your signature touch.

We offer a wide range of personalization options, with visual and technical enhancements for the interior and exterior. From a single alteration to extensive modifications. Your inspiration is our passion.

Be inspired by our examples on the following pages and visit www.porscheusa.com/exclusive-manufaktur to learn everything you need to know about configuring these extraordinary vehicles.

A configuration example from the Porsche Exclusive Manufaktur.

- 1 LED Headlights in Black including Porsche Dynamic Light System Plus (PDLS Plus)
- 2 21-inch Sport Classic wheels painted in High Gloss Black, side blades painted in High Gloss Black, door handles painted in High Gloss Black
- 3 Porsche Crest on headrests (front and outer rear seats), Deviated Stitching Interior Package in Mamba Green
- 4 Interior Trim painted in Mamba Green Metallic, Deviated Stitching Interior Package in Mamba Green, Personalized Floor Mats with Leather Edging
- 5 SportDesign Package painted in High Gloss Black, door handles painted in High Gloss Black, LED Headlights in Black including Porsche Dynamic Light System Plus (PDLS Plus)



The Macan Turbo in Mamba Green Metallic.



The Macan S in Volcano Grey Metallic.

1



2



3



4



5

A configuration example from the Porsche Exclusive Manufaktur.

- 1 20-inch Macan Turbo Wheels painted in Volcano Grey Metallic, SportDesign Package, Sport Tailpipes in Black, SportDesign Exterior Mirrors
- 2 SportDesign Exterior Mirrors
- 3 20-inch Macan Turbo Wheels painted in Volcano Grey Metallic
- 4 Heated Steering Wheel in Anthracite Chestnut, Instrument Dials in Mojave Beige, Sport Chrono Stopwatch Dial in Mojave Beige
- 5 Deviated Leather Seat Centers in Black, Interior Trim in Anthracite Chestnut, Seat Belts in Mojave Beige, Porsche Crest on headrests (front and outside rear seats)

Exterior colors.

Solid exterior colors.



White



Black

Special colors.



Chalk



Carmine Red



Miami Blue

Metallic exterior colors.



Volcano Grey Metallic



Carrara White Metallic



Mahogany Metallic



Dolomite Silver Metallic



Sapphire Blue Metallic



Night Blue Metallic



Jet Black Metallic



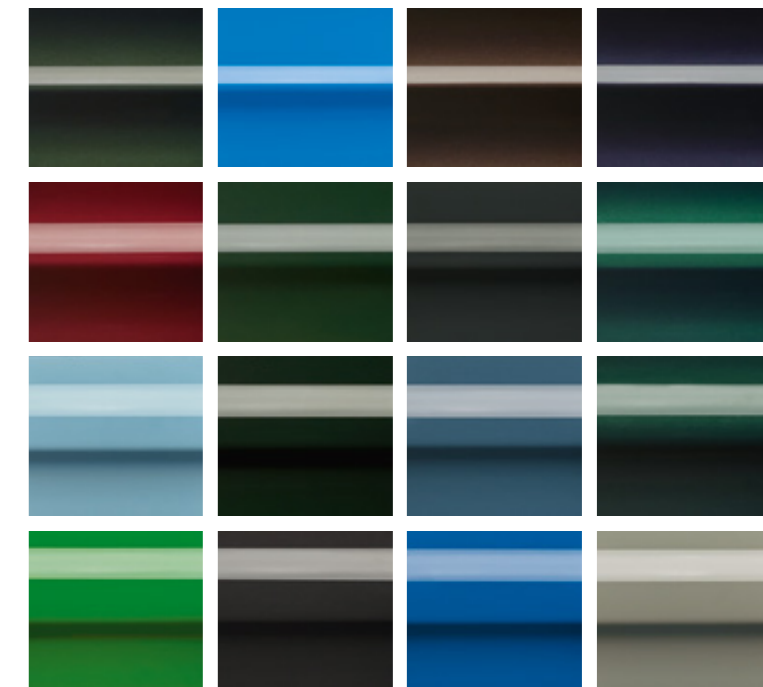
Mamba Green Metallic

Color to sample.

Highlight the individuality of your Porsche with a color developed specially for you, based on your sample.

Custom exterior colors.

Choose from an extended range of solid and metallic colors with a number of historic Porsche, classic and modern colors.



Interior colors.

Standard interior colors with Race-Tex Seat Centers.



Black
(roof lining and carpet: black)



Agate Grey
(roof lining²⁾ and carpet: Agate Grey)



Two-tone: black and Mojave Beige
(roof lining and carpet³⁾: black)

Leather Package interior colors¹⁾.



Black
(roof lining and carpet: black)



Agate Grey
(roof lining²⁾ and carpet: Agate Grey)



Two-tone: black and Mojave Beige
(roof lining and carpet³⁾: black)



Two-tone: black and Garnet Red
(roof lining and carpet³⁾: black)

Leather interior colors.



Black
(roof lining and carpet: black)



Agate Grey
(roof lining²⁾ and carpet: Agate Grey)



Two-tone: black and Mojave Beige
(roof lining and carpet³⁾: black)



Two-tone: black and Garnet Red
(roof lining and carpet³⁾: black)



Two-tone: Agate Grey and Pebble Grey
(roof lining and carpet³⁾: Agate Grey)

Natural Leather interior colors.



Espresso
(roof lining²⁾ and carpet: Espresso)

GTS leather package.¹⁾



Black
including Race-Tex items²⁾

GTS leather interior.



Black
including Race-Tex items²⁾



Black with GTS interior package in Carmine Red
with Race-Tex items²⁾



Black with GTS interior package in Chalk
with Race-Tex items²⁾



Black with GTS interior package in Carmine Red
with no Race-Tex items



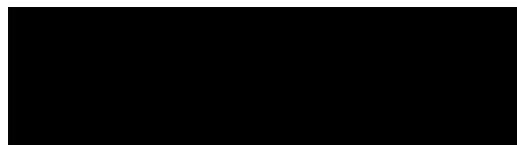
Black with GTS interior package in Chalk
with no Race-Tex items

1) The leather package (partial leather interior) incorporates leather on the dashboard, lid of the center console storage compartment, seat centers, inner seat bolsters, headrests, armrests, door panels and door pulls. In conjunction with a two-tone color combination, leather items are in a contrasting color.
2) If the optional panoramic roof system is chosen, the sunblind in contrasting color is finished in black.
3) Carpet in luggage compartment in darker color.

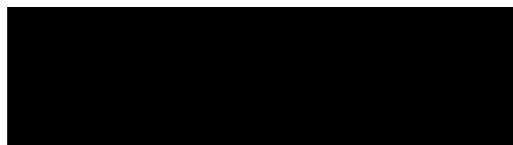
1) The leather package (partial leather interior) incorporates leather on the dashboard, lid of the center console storage compartment, seat centers, inner seat bolsters, headrests, armrests, door panels and door pulls. In conjunction with a two-tone color combination, leather items are in a contrasting color.
2) Race-Tex items on seat centers front and rear, door armrests front and rear and center console armrest.



Interior trims.



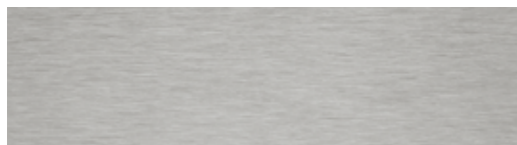
Black (standard)



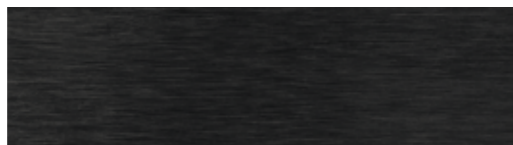
High Gloss Black



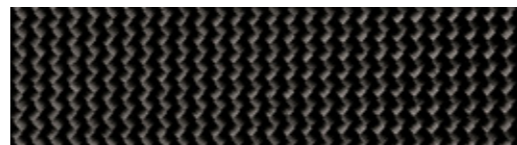
Interior trim painted *Porsche Exclusive Manufaktur*



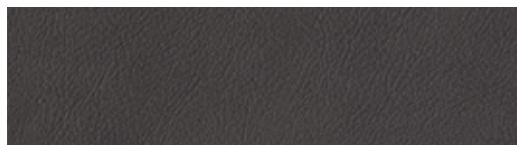
Brushed Aluminum



Black Brushed Aluminum



Carbon Fiber



Interior Trim in Leather *Porsche Exclusive Manufaktur*



Dark Walnut¹⁾



Anthracite Chestnut with Aluminum Inlay^{1),2)} *Porsche Exclusive Manufaktur*

1) Since wood is a natural product, there may be variations in color and grain.
2) Decorative steering wheel also available from Porsche Exclusive Manufaktur.



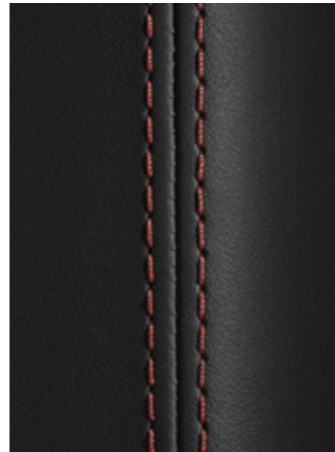
Enhanced interior Personalization.

How about even more design freedom in the vehicle interior? The Deviated Stitching and Deviated Leather Seat Centers Packages from Porsche Exclusive Manufaktur make it possible to configure your Macan to meet your individual needs, while lending additional accents to the interior. The packages are available in all standard colors. Whether used individually or in combination – the result is always a harmonious overall image that makes your Macan one thing above all else: one-of-a-kind.

Be inspired by our color combinations. Or visit www.porscheusa.com to access the Porsche Car Configurator.



— Deviated Stitching Interior Package
— Deviated Leather Seat Centers



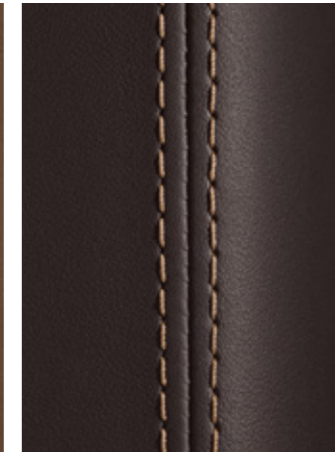
Leather: black
Deviated stitching: Garnet Red



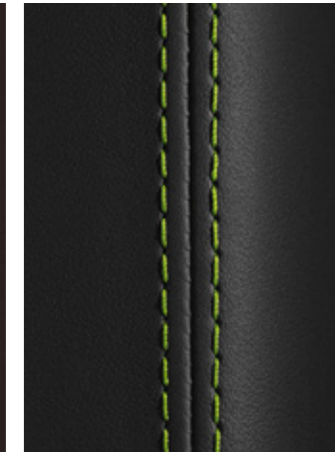
Leather: Agate Grey
Deviated stitching: Pebble Grey



Leather: Mojave Beige
Deviated stitching: black



Leather: Espresso
Deviated stitching: Mojave Beige



Leather: black
Deviated stitching: Acid Green



Leather: black
Seat centers in leather: Garnet Red
Deviated stitching: Garnet Red



Leather: Mojave Beige
Seat centers in leather: black
Deviated stitching: black



Leather: Agate Grey
Seat centers in leather: Pebble Grey
Deviated stitching: Pebble Grey



Leather: Espresso
Seat centers in leather: Mojave Beige
Deviated stitching: Mojave Beige



Leather: black
Seat centers in leather: Pebble Grey
Deviated stitching: Garnet Red

Wheels.



1

- 1 20-inch RS Spyder Design wheel in Satin Black
 - 2 18-inch Macan wheel
 - 3 18-inch Macan S wheel
 - 4 19-inch Macan Sport wheel
 - 5 19-inch Macan Design wheel
 - 6 20-inch Macan Turbo wheel in Dark Titanium with highly polished surfaces (exclusive to the Macan Turbo)
 - 7 20-inch Macan Turbo wheel in Satin Platinum
 - 8 21-inch RS Spyder Design wheel
 - 9 21-inch 911 Turbo Design wheel
 - 10 21-inch Sport Classic wheel
- Porsche Exclusive Manufaktur*



2



3



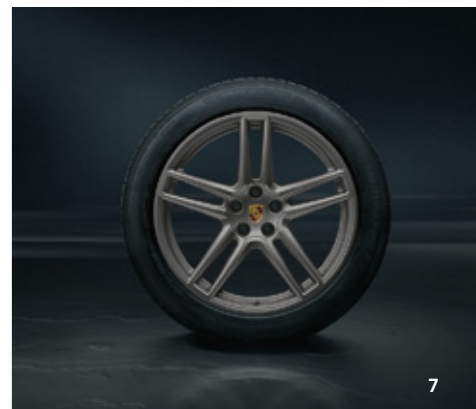
4



5



6



7



8



9



10

Porsche Exclusive Manufaktur.



Clear LED taillights and light strip

Porsche Exclusive Manufaktur



21-inch Sport Classic wheel painted in exterior color

Porsche Exclusive Manufaktur



SportDesign Exterior Mirrors Painted in Exterior Color

Porsche Exclusive Manufaktur



Interior Trim Painted in Exterior Color

Porsche Exclusive Manufaktur



Sport Tailpipes in Black

Porsche Exclusive Manufaktur



20-inch Macan Turbo wheel painted in High Gloss Black

Porsche Exclusive Manufaktur



Model Designation on Center Console Armrest

Porsche Exclusive Manufaktur



Porsche Crest on Headrests (Front)

Porsche Exclusive Manufaktur

Personalization options.



LED Headlights including PDLs Plus



Panoramic roof system



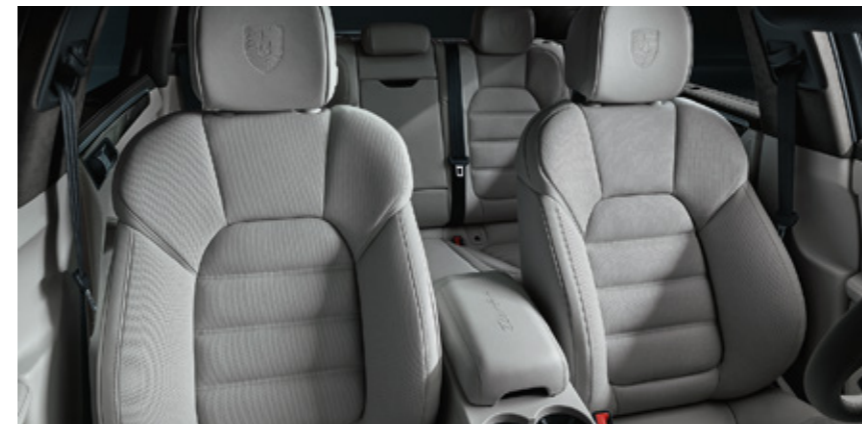
Sport Chrono Package with mode switch



Side Blades in Brilliant Silver¹⁾



21-inch 911 Turbo Design wheel



Adaptive Sport Seats, front (18-way, electric)



Burmester® High-End Surround Sound System

¹⁾ Note for the Macan GTS: the 'GTS' logo in Satin Black is omitted when side Blades are painted in Brilliant Silver.

Porsche Tequipment.

With Porsche Tequipment products developed specifically for your Macan, you can style it entirely to your own preference. Right from the start, the same rules that apply to our vehicles also apply to the Porsche Tequipment products: developed, tested and proven at the Development Center in Weissach. By the same Porsche engineers and designers who made your car. Designed with the complete vehicle in mind and precisely tailored to your Porsche.

And your original car warranty? It will remain completely intact, whichever Tequipment products you ask your authorized Porsche dealer to fit.

To discover more about Porsche Tequipment, please consult your authorized Porsche dealer. Or visit www.porscheusa.com/tequipment to view the information online. Scan the QR code to go straight to our Tequipment accessories finder, where you can view all the products in detail.



1 Roof boxes

High-quality plastic boxes, available in High Gloss Black with a capacity of approximately 320 or 520 liters.

2 Care sets

Interior and exterior care products optimally suited to your Porsche.

3 Summer and winter wheel and tire sets

For enhanced individuality, agility and safety. And for even greater driving pleasure.



Porsche Car Configurator.

The Macan dream comes in many shapes and colors. The Porsche Car Configurator allows you to quickly and intuitively discover which dream suits you the best.

In the search for your genuine dream car, you can now not only create your personal configuration on your computer and tablet, but also on your smartphone. Using freely selectable perspectives and 3D animations on your desktop. Individual recommendations help you to make the right decision.

Visit www.porscheusa.com to access the Porsche Car Configurator and learn more about Fascination Porsche.





The Porsche Experience Center Atlanta*

The Porsche Experience Center Atlanta offers guests an opportunity to increase their driving prowess with challenging test track and training facilities. Visit www.porschedriving.com or call 1-800-PORSCHE to learn more.



Porsche European Delivery

Imagine touring the original factory and then being handed the keys for an even more gratifying opportunity—touring Europe in your brand new Porsche vehicle. What happens next is up to you. Contact your authorized Porsche dealer for more information.



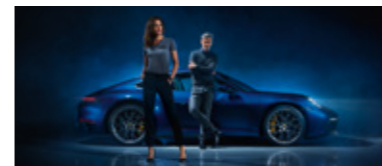
Porsche Exclusive Manufaktur*

Realize your vision of the perfect Porsche with our factory customization program. From styling enhancements to performance upgrades, all modifications are uniquely handcrafted for your Porsche vehicle. Please visit www.porscheusa.com/exclusive for more information.



Porsche Tequipment*

Personalize your Porsche vehicle at any time with our range of aftermarket accessories. You will also find all our available products online at www.porscheusa.com/tequipment.



Porsche Driver's Selection*

With products ranging from fashion and accessories to tailored luggage, this unique collection combines quality and style with everyday practicality. Visit your authorized Porsche dealer or shop online at www.porscheusa.com/shop.



Porsche Travel Experience

Join us for all-inclusive Porsche vacations and exhilarating driving experiences that awaken a sense of adventure in even the most seasoned travelers. Visit www.porschedriving.com/travel-experience for more information.



Porsche Track Experience-USA (PTX-USA)*

There's no better place to hone your driving skills than in the cockpit of a Porsche. For both Porsche owners and enthusiasts, we offer introductory level through race licensing courses. For more information call 770-290-7000 or visit www.porschedriving.com/track-experience



Porsche Clubs

Since the first Porsche Club was founded in 1952, its number has grown to 660 chapters, with a total of 195,000 members worldwide. To find out more, go to www.porscheusa.com/porscheclub.

The Porsche Experience Center LA*

At the Porsche Experience Center LA, guests can navigate through our 1.3 mile Handling Circuit, off-road courses, and low friction modules that demonstrate the core of Porsche engineering. Visit www.porschedriving.com or call 1-800-PORSCHE

Porsche Roadside Assistance

Enjoy peace of mind with our exclusive breakdown and accident recovery service. Membership is free when you buy a new Porsche vehicle.

Porsche Approved Certified Pre-Owned

Only the best Porsche cars earn the right to be called "Certified." An 111-point inspection, a 2-year Unlimited Mile Warranty,** and 24-Hour Roadside Assistance make this program one-of-a-kind. Contact your authorized Porsche dealer for details.

Porsche Financial Services (PFS)

Our range of financial and vehicle protection products offers Porsche owners support at every turn. Porsche Financial Services offers you the perfect financing and vehicle protection solutions. Learn more at www.porscheusa.com/pfs or your authorized Porsche dealer.

Christophorus

Christophorus magazine covers every aspect of Porsche offerings and the overall lifestyle of our owners and enthusiasts.

Porsche Classic

Your specialized source for genuine Porsche parts as well as restoration services for all Porsche classics. Visit www.porscheusa.com/classic to find out more.

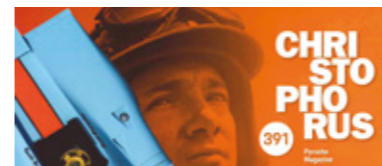
Porsche Museum

More than 80 vehicles at our headquarters in Stuttgart-Zuffenhausen, Germany, await to take you on a journey through Porsche history. See icons such as the 356, 911, and 917 presented in an atmosphere you can't experience anywhere else.

Porsche Online

Go to www.porscheusa.com for all the latest news and information from Porsche.

Follow us on:   



* You can obtain the latest brochures for Porsche Experience Center Atlanta, Porsche Experience Center Los Angeles, Porsche Exclusive Manufaktur, Porsche Tequipment, Porsche Driver's Selection, and Porsche Track Experience-USA from your authorized Porsche dealer.
** 2-year/Unlimited Mile Warranty coverage after the expiration of the new vehicle limited warranty or from the date of sale if the new vehicle warranty has expired.



Technical data.

Engine	Macan	Macan S
Type	Turbocharged inline 4	Turbocharged V6
Number of cylinders	4	6
Valves/cylinders	4	4
Engine displacement	2.0 liter	3.0 liter
Max. power at rpm	248 hp 5,000–6,750	348 hp 5,400–6,400
Max. torque at rpm	273 lb.ft. 1,600–4,500	354 lb.ft. 1,360–4,800
Transmission		
Drive	Porsche Traction Management (PTM): active all-wheel drive system with an electronically variable, map-controlled multi-plate clutch, automatic brake differential (ABD) and anti-slip regulation (ASR)	Porsche Traction Management (PTM): active all-wheel drive system with an electronically variable, map-controlled multi-plate clutch, automatic brake differential (ABD) and anti-slip regulation (ASR)
Transmission	7-speed Porsche Doppelkupplung (PDK)	7-speed Porsche Doppelkupplung (PDK)
All-wheel torque distribution, front/rear	Variable	Variable

Engine	Macan GTS	Macan Turbo
Type	Twin turbocharged V6	Twin turbocharged V6
Number of cylinders	6	6
Valves/cylinders	4	4
Engine displacement	2.9 liter	2.9 liter
Max. power at rpm	375 hp at 5,200–6,700	434 hp 5,700–6,600
Max. torque at rpm	383 lb.ft. at 1,750–5,000	405 lb.ft. at 1,800–5,600
Transmission		
Drive	Porsche Traction Management (PTM): active all-wheel drive system with an electronically variable, map-controlled multi-plate clutch, automatic brake differential (ABD) and anti-slip regulation (ASR)	Porsche Traction Management (PTM): active all-wheel drive system with an electronically variable, map-controlled multi-plate clutch, automatic brake differential (ABD) and anti-slip regulation (ASR)
Transmission	7-speed Porsche Doppelkupplung (PDK)	7-speed Porsche Doppelkupplung (PDK)
All-wheel torque distribution, front/rear	Variable	Variable

Chassis	Macan	Macan S
Front axle	Fully independent double wishbone suspension	Fully independent double wishbone suspension
Rear axle	Self-tracking trapezoidal-link suspension	Self-tracking trapezoidal-link suspension
Steering	Power-assisted (electromechanical)	Power-assisted (electromechanical)
Turning radius	39.3 ft	39.3 ft
Brakes	Four-piston aluminum monobloc fixed brake calipers at front; single-piston combination floating brake calipers at rear, internally vented discs, front and rear	Six-piston aluminum monobloc fixed brake calipers at front; single-piston combination floating brake calipers at rear, internally vented discs, front and rear
Brake discs, front axle diameter/thickness	345 mm/30 mm	360 mm/36 mm
Brake discs, rear axle diameter/thickness	330 mm/22 mm	330 mm/22 mm
Wheels	Front: 8 J × 18 ET 21, Rear: 9 J × 18 ET 21	Front: 8 J × 18 ET 21, Rear: 9 J × 18 ET 21
Tires	Front: 235/60 R 18, Rear: 255/55 R 18	Front: 235/60 R 18, Rear: 255/55 R 18

Weights

Curb weight	4,099 lbs	4,293 lbs
Gross Vehicle weight	5,534 lbs	5,688 lbs
Maximum payload	1,435 lbs	1,395 lbs
Maximum permissible roof load with Porsche roof transport system	165 lbs	165 lbs
Maximum trailer load (braked)	4,409 lbs	4,409 lbs

Performance

Top track speed	141 mph	157 mph
Acceleration 0–60 mph	6.3 secs	5.1 secs
Acceleration 0–60 mph (seconds) with Launch Control ¹⁾	6.1 secs	4.9 secs

Chassis	Macan GTS	Macan Turbo
Front axle	Fully independent double wishbone suspension	Fully independent double wishbone suspension
Rear axle	Self-tracking trapezoidal-link suspension	Self-tracking trapezoidal-link suspension
Steering	Power-assisted (electromechanical)	Power-assisted (electromechanical)
Turning radius	39.3 ft	39.3 ft
Brakes	Six-piston aluminum monobloc fixed brake calipers at front; single-piston combination floating brake calipers at rear, internally vented discs, front and rear	Six-piston aluminum monobloc fixed brake calipers at front; single-piston combination floating brake calipers at rear, internally vented discs, front and rear
Brake discs, front axle diameter/thickness	360 mm/36 mm	390 mm/38 mm
Brake discs, rear axle diameter/thickness	330 mm/22 mm	356 mm/28 mm
Wheels	Front: 9 J × 20 ET 26, Rear: 10 J × 20 ET 19	Front: 9 J × 20 ET 26, Rear: 10 J × 20 ET 19
Tires	Front: 265/45 R 20, Rear: 295/40 R 20	Front: 265/45 R 20, Rear: 295/40 R 20

Weights

Curb weight	4,370 lbs	4,430 lbs
Gross Vehicle weight	5,687 lbs	5,687 lbs
Maximum payload	1,370 lbs	1,257 lbs
Maximum permissible roof load with Porsche roof transport system	165 lbs	165 lbs
Maximum trailer load (braked)	4,409 lbs	4,409 lbs

Performance

Top track speed	162 mph	167 mph
Acceleration 0–60 mph	4.7 secs	4.3 secs
Acceleration 0–60 mph (seconds) with Launch Control ¹⁾	4.5 secs	4.1 secs

1) In conjunction with the optional Sport Chrono Package.

Volumes	Macan	Macan S	Macan GTS	Macan Turbo
Luggage compartment volume	17.6 ft ³	17.6 ft ³	17.6 ft ³	17.6 ft ³
Luggage compartment volume with rear seat folded down	52.9 ft ³	52.9 ft ³	52.9 ft ³	52.9 ft ³
Fuel tank capacity	19.8 gal	19.8 gal	19.8 gal	19.8 gal
Dimensions				
Length	184.9 in.	184.9 in.	184.5 in.	184.5 in.
Width including (folded) exterior mirrors	82.6 in. (76.2 in.)	82.6 in. (76.2 in.)	82.6 in. (76.2 in.)	82.6 in. (76.2 in.)
Height (including roof rails)	64.0 in.	64.0 in.	63.0 in.	64.0 in.
Wheelbase	110.6 in.	110.6 in.	110.6 in.	110.6 in.



A Few Important Words About Porsche Driver Assistance Systems ...

- 1** None of Porsche's Driver Assistance Systems can prevent accidents or loss of control.
- 2** No Driver Assistance System is ever a substitute for attentive driving. It is the driver's responsibility to be observant and in control of the vehicle at all times.
- 3** Please see your vehicle's owners' manual for further details about, and important limitations of, each of the specific systems described below.

ACTIVE LANE KEEP

- 1** Active Lane Keep may not detect lane markings in certain road, weather, and driving conditions.
- 2** System is available only in conjunction with active Adaptive Cruise Control (ACC).

ADAPTIVE CRUISE CONTROL

- 1** Adaptive Cruise Control should not be used in unfavorable road conditions and poor weather conditions.
- 2** Adaptive Cruise Control automatically maintains a set speed and a set distance at a speed above approximately 19 mph – 130 mph.

AUTO EMERGENCY STOP

- 1** Auto Emergency Stop depends in part on signals from the worldwide Global Positioning Satellite network. The vehicle's electronic system and data connection, and existing wireless satellite technology, must be available and operating properly for the system to function fully.

PORSCHE DYNAMIC LIGHTING SYSTEM

- 1** Static cornering lights – At speeds of up to 80 mph static cornering light is switched on when the steering wheel is turned.
- 2** Dynamic cornering light – Above a speed of around 3 mph, the low beam or high beam headlights are swiveled in the direction of the curve to illuminate the road more clearly, depending on the speed of the vehicle and the extent to which the steering wheel is turned.

PORSCHE DYNAMIC LIGHTING SYSTEM (PLUS)

- 1** High Beam Assistant is switched on at between 20 mph and 37 mph.

HEAD-UP DISPLAY

- The driver's view of the information in the head-up display may be impaired by the following factors:
- Sunglasses with certain polarizing
 - Wet roads
 - Unfavorable lighting conditions

PORSCHE INNODRIVE INCLUDING ADAPTIVE CRUISE CONTROL

- 1** InnoDrive depends in part on signals from the worldwide Global Positioning Satellite network. The vehicle's electronic system and data connection, and existing wireless satellite technology, must be available and operating properly for the system to function fully.
- 2** Construction zones, traffic flow, and other road system changes are beyond the control of Porsche Cars North America. Complete detailed mapping of lanes, roads, streets, toll roads, tollbooths, highways, road signs, and so forth is impossible. Therefore, you may encounter discrepancies between the mapping and the actual location and conditions you encounter. Always pay careful attention to the road, give precedence to directional signs on the road and not the system, and do not drive while distracted.

INTERSECTION ASSIST

- 1** This system detects only other vehicles, but not people, cyclists, or animals, for example.

LANE CHANGE ASSIST

- 1** Lane Change Assist operates above a driving speed of approximately 10 mph.
- 2** Rear Turn Assist – Supports Lane Change Assist only when driving off and on the vehicle side on which the turn signal was actuated. Active at speeds up to approximately 12 mph.

LANE KEEP ASSIST WITH TRAFFIC SIGN RECOGNITION

- 1** Lane Keep Assist may not detect lane markers in certain road, weather, or driving conditions. Please see owner's manual for further details and important warnings about limitations of the system.
- 2** This system depends in part on signals from the worldwide Global Positioning Satellite network. The vehicle's electronic system and data connection, and existing wireless satellite technology, must be available and operating properly for the system to function fully.
- 3** Traffic Sign Recognition may not always see or understand every sign. It depends upon a clear, unobstructed view of the road ahead, and well-maintained and clean road signs of generally recognized types.
- 4** Lane Keep Assist may be passive if the vehicle speed is below the activation speed of approximately 40 mph.

NIGHT VISION ASSIST

- 1** Night Vision Assist does not prevent accidents. The system may not represent objects as the eye does. It will not detect persons or animals under certain lighting and temperature conditions, and it cannot detect inanimate objects in the road.
- 2** Night Vision Assist detects persons and animals when it is sufficiently dark and at an ambient temperature below 82°.

PARKASSIST (FRONT AND REAR) WITH VISUAL AND AUDIBLE WARNING

- 1** ParkAssist cannot detect sound-absorbing obstacles such as powdery snow, clothing made from fabric, skin or fur; sound-reflecting obstacles such as glass surfaces, flat painted surfaces, very thin obstacles, i.e. thin posts or obstacles above and below the sensors.
- 2** ParkAssist is activated automatically up to a speed of approximately 10 mph. and when operational readiness is established in the following situations: Reverse gear engaged or distance in front is less than approximately 32 in. or rolling backward is detected.

REVERSING CAMERA – THE OBJECTS SHOWN BY THE CAMERA APPEAR DISTORTED.

THE IMAGE FROM THE REAR VIEW CAMERA DOES NOT SHOW THE ENTIRE AREA BEHIND THE VEHICLE.

Surround View – The objects shown by the cameras appear distorted. Many of the screen windows do not show the entire area around the vehicle.

TRAFFIC JAM ASSIST

- 1** Traffic Jam Assist supports the driver when driving in traffic jam situations or in slow-moving traffic in a speed range below approximately 40 mph.

WARN AND BRAKE ASSIST (COLLISION AND BRAKE ASSIST)

- 1** Warn and Brake Assist cannot prevent most collisions, although it may help to reduce their severity.
- 2** In addition, Warn and Brake Assist may not detect every object in the road.
- 3** The system may not operate if certain evasive maneuvers are performed by the driver.
- 4** The system is available as of walking speed and can react to pedestrians or cyclists up to a speed of approximately 53 mph.
- 5** The function may be restricted or unavailable up to 10 seconds after establishing operational readiness, and other instances.

WET MODE

- 1** WET Mode depends on sensors in the front wheel arches. It cannot provide assistance if there is too much water present, if the vehicle is driving too fast, or if the sensors are obstructed by dirt, excessive water or other obstructions.
- 2** WET Mode cannot detect or prevent aquaplaning.

Not all the Driver Assistance Systems described in this brochure are installed or available on every model. Some Driver Assistance Systems are optional at extra cost. Some Driver Assistance Systems require the selection of other systems or options at additional cost. Some Driver Assistance Systems are not available in combination with others. Ask your authorized Porsche dealer for details about the models and systems in which you are interested.



Dr. Ing. h.c. F. Porsche AG is the owner of numerous trademarks, both registered and unregistered, including without limitation the Porsche Crest®, Porsche®, Boxster®, Carrera®, Cayenne®, Cayman®, Macan®, Panamera®, Spyder®, Taycan®, Tiptronic®, VarioCam®, PCM®, PDK®, 911®, 718®, RS®, 4S®, 918 Spyder®, FOUR UNCOMPROMISED®, and the model numbers and distinctive shapes of the Porsche automobiles such as, the federally registered 911 and Boxster automobiles. The third party trademarks contained herein are the properties of their respective owners. All text, images, and other content in this publication are protected by copyright. No part of this publication may be reproduced in any form or by any means without prior written permission of Porsche Cars North America, Inc. Porsche Cars North America, Inc.

believes the specifications to be correct at the time of printing. However, specifications, standard equipment and options are subject to change without notice. Some options may be unavailable when a car is built. Some vehicles may be shown with non-U.S. equipment. Please ask your authorized Porsche dealer for advice concerning the current availability of options and verify the optional equipment that you ordered. Porsche recommends seat belt usage and observance of traffic laws at all times.

Effective from: 01/2021
Printed in Germany
WSLA2101001923 EN/US

© 2021 Porsche Cars North America, Inc.
One Porsche Drive
Atlanta, GA 30354
www.porscheusa.com

