



PORSCHE



# Tequipment Panamera

Accessories for the new Panamera models



**It's not the idea that changes everything.  
But the courage to implement it.**

Courageous thinking and action is a Porsche tradition. The Panamera changes everything. Apparent opposites combined in a sports car: performance and comfort, dynamism and efficiency, work and family. Porsche Equipment products allow you to customise your Panamera to suit your requirements. Individually and after purchase, precisely tailored to your needs. Porsche genuine accessories are designed by the same engineers and designers who make your car. And whichever Equipment products you ask your Porsche Centre to fit, your Porsche will always be the masterpiece that the developers in Weissach envisaged it to be. And the warranty? Completely unaffected.

Consult your Porsche Centre to discover more about Porsche Equipment, and use our online 'Equipment accessories finder' at [www.porsche.com/equipment](http://www.porsche.com/equipment) to browse the full range of products.



# Contents

## Exterior and performance

Design, dynamics, elegance – all of which can be enhanced. By you. With the SportDesign package or sports tailpipes from Porsche Tequipment for instance.

## 6 Wheels and accessories

Courage of individuality doesn't stop with the wheels. Go your own way, with wheels, tyres and accessories from Porsche Tequipment.

## 18 Interior, audio and communication 40

The interior of a Panamera is full of interactive features. Look, feel, interaction – all exactly as you imagine. And all 100% Porsche, of course.

## Transport, protection and car care 50

Intelligent transport solutions, Porsche child seats and car care products. Your Porsche conveys far more than just sportiness.

## Winter accessories

Ready to meet any sporting challenge all year round, even snow.

## 72 E-Performance

Innovative performance requires equally efficient infrastructure: charging equipment for the Panamera E-Hybrid models.

## 80 Equipment accessories finder 86

Discover all the Tequipment options online for your Panamera.

## Porsche World

A brief insight into the world of Porsche.

## Index

88

90

## Exterior and performance

### **Those who determine form are allowed to change it.**

Performance and comfort. Dynamism and efficiency. With a streamlined design, clear proportions and enhanced performance, the new Panamera offers more Porsche than ever.

So why change anything on a Panamera? Because you should remain faithful to a single approach: your own. After all, only you have the freedom to make your sports car even more dynamic and powerful. According to your exact wishes. With the SportDesign package, tinted LED taillights or sports tailpipes, for example. Of course, the Porsche Tequipment accessories were developed alongside the Panamera. How else would they be a perfect fit?





### **SportDesign package**

Athletes are characterised by their muscles. The SportDesign package specially developed for the Panamera lends it a distinctive look and an even more powerful appearance. It includes a unique SportDesign front apron, unique

SportDesign sideskirts and a unique rear apron. All components are available in the exterior colour. The air intakes and C blades in the front apron are available in satin black, as is the diffuser in the rear apron, thereby lending a perfect finish. The front licence plate carrier is also

included in the package and can be painted in the exterior colour.





**SportDesign package  
painted in black (high-gloss)**

The SportDesign package painted in black (high-gloss) is also expressive and stylish. The SportDesign front apron, SportDesign rear apron and SportDesign sideskirts lend a unique, impressive appearance.

They are also available painted in the exterior colour, as is the licence plate carrier. To round off the look, the air intakes and C-blades in the front apron are available painted in black (high-gloss), as is the diffuser in the rear apron.



**You're welcome to shift up a gear. Even when it comes to the design.**

Headwind – so what? That's when the fun really begins for you and our engineers. Because having defined lines pays off in life. But in a sports car, these should be designed so as not to interfere with the dynamics. That's why the Panamera SportDesign package has also undergone complex testing at the Porsche Development Centre in Weissach, in the wind tunnel and on the racetrack.

The high-tech wind tunnel sets new standards. With its 8 metre diameter and extremely lightweight carbon vanes, the fan can produce wind speeds of

up to 300 km/h. The wind also moves the ground under the Panamera during the aerodynamic test. Headwind that pays off: in a perfect design and first-class air resistance values.

And on the road? The overall package design is a real hit in real-life conditions.

**! DID YOU KNOW ...**

... that the Panamera fitted with the SportDesign package undergoes the same test situations as the standard vehicle? As well as the legal crash behaviour and pedestrian protection requirements, we also complete a climatic change check which tests the vehicle at temperatures of between +90 and -40 °C.





**Tinted LED taillights including light strip**

These LED taillights including light strip have an impressive, distinctive design. Parts of the taillights and light strip are clear tinted glass while the interior components are black, leaving a dominant, lasting impression on the rear of your Panamera, with their dark, elegant appearance.

The functions and geometry are the same as the standard taillights.



**SportDesign sideskirts**

This set includes sideskirts in a unique design and is available painted in the exterior colour. A striking detail to lend your Panamera an even more individual look.





#### **Exterior mirrors painted**

Where can you find elegance? In the detail. These paintable exterior mirrors allow you to add that something extra to your Panamera: style. The standard exterior mirror lower trims and base are painted in black (high-gloss) and the exterior mirror upper trims in the exterior colour.

For customers who want their exterior mirrors to be painted entirely in the exterior colour or black (high-gloss), Porsche Tequipment offers the perfect solution: paintable exterior mirror upper trims and exterior mirror lower trims and base.

#### **Air outlet trims painted**

These paintable air outlet trims lend your Panamera an even more individual appearance.



#### **Sports tailpipes in silver colour**

Right at the back, yet way ahead when it comes to dynamics: these two round twin tailpipes in silver colour have a distinctive design, lending the rear of your car an individual and powerful appearance.



#### **Sports tailpipes in black**

A sporty understatement: these twin tailpipes in black chrome have a unique design, lending the rear of your Panamera an even sportier appearance.





### **Made for leaving your mark, inch by inch.**

Be a pioneer. Simply the most exciting way of leaving your mark. And so that you can look forward to your next destination, you should always be well prepared: with the right wheels from Porsche Tequipment. They are very impressive: in terms of driving dynamics and safety, as well as visually. Because they have been designed and tested without compromise. For unbridled driving pleasure. All year round.



## **Wheels and accessories**





### **Fully on track. Especially when it comes to your driving pleasure.**

Porsche wheels and tyres – your direct contact with the road. And therefore crucial when it comes to driving pleasure and safety. Any compromises? Absolutely not. All our tyres must therefore be fit for Porsche. After all, that's the only way they can keep up with your life. Our engineers and drivers scrutinise each individual tyre under the toughest conditions. Our experts push them to their limits. In snow, on wet roads and dry asphalt, the tyres have to show what they're made of. Test criteria include performance, rolling resistance and rolling noise. And the programme also encompasses traction and braking tests on an irrigated dynamic surface.

It's no wonder that only the best tyres ultimately receive our N-rating. In particular, these high-performance tyres differ from other tyres in terms of their tyre geometry, rubber compound and complex test procedure, with a total of 33 key criteria. In addition to 12 objective outdoor criteria, such as wet and dry braking behaviour and service life, for example, these also include 16 objective test bench criteria, including rolling resistance and high-speed performance. Five subjective outdoor criteria are also considered, such as handling and driving comfort, for example. The tangible result: driving pleasure and safety.

#### **! DID YOU KNOW ...**

... that the foundations for Porsche wheel testing are laid during laps of the Nürburgring? Because the values recorded there serve as input parameters for our subsequent wheel testing. Such as endurance testing in the so-called biaxial wheel test (ZWARP) – when sustained loading of extreme driving is simulated. The result: safe, high-performance wheels. Made in Weissach.







**21-inch Exclusive Design wheels painted in black (high-gloss) with summer tyres**

**21-inch Exclusive Design wheels painted in satin platinum with summer tyres**

**21-inch Exclusive Design wheels with summer tyres**

**21-inch Panamera SportDesign wheels with summer tyres**



**21-inch 911 Turbo Design wheels with summer tyres**

**20-inch Panamera Turbo wheels with summer tyres**

**20-inch Panamera Design wheels with summer tyres**



The 21-inch Exclusive Design wheels shown are expected to be available from 06/2017.



**21-inch Panamera SportDesign wheels with winter tyres**

**20-inch Exclusive Design wheels painted in satin platinum with winter tyres**

**20-inch Exclusive Design wheels with winter tyres**



**20-inch Panamera Turbo wheels with winter tyres**

**19-inch Panamera wheels with winter tyres**

**21-inch Exclusive Design wheels painted in black (high-gloss) with summer tyres**

**Details:** painted in black (high-gloss), with selected surfaces highly polished and a painted rim well. Includes wheel centres with full-colour Porsche Crest.

Provisionally available for all Panamera models from 06/2017.

🔍 Please refer to our Equipment accessories finder at [www.porsche.com/equipment](http://www.porsche.com/equipment) for information about all tyre specifications.



**21-inch Exclusive Design wheels painted in satin platinum with summer tyres**

**Details:** a satin platinum finish and painted rim well. Includes wheel centres with full-colour Porsche Crest.

Provisionally available for all Panamera models from 06/2017.



**21-inch Exclusive Design wheels with summer tyres**

**Details:** painted in platinum silver with selected surfaces highly polished.

The wheel centres shown are not included. They can be purchased as an additional item from the Equipment accessories programme.

Provisionally available for all Panamera models from 06/2017.

**21-inch Panamera SportDesign wheels with summer tyres**

**Details:** painted in silver colour.

The wheel centres shown are not included. They can be purchased as an additional item from the Tequipment accessories programme.

Available for all Panamera models.

 Please refer to our Tequipment accessories finder at [www.porsche.com/tequipment](http://www.porsche.com/tequipment) for information about all tyre specifications.



**21-inch 911 Turbo Design wheels with summer tyres**

**Details:** painted in dark titanium.

The wheel centres shown are not included. They can be purchased as an additional item from the Tequipment accessories programme.

Available for all Panamera models.



**20-inch Panamera Turbo wheels with summer tyres**

**Details:** painted in silver colour.

The wheel centres shown are not included. They can be purchased as an additional item from the Tequipment accessories programme.

Available for all Panamera models.

**20-inch Panamera Design wheels with summer tyres**

**Details:** painted in silver colour.

The wheel centres shown are not included. They can be purchased as an additional item from the Tequipment accessories programme.

Available for all Panamera models.

🔍 Please refer to our Tequipment accessories finder at [www.porsche.com/tequipment](http://www.porsche.com/tequipment) for information about all tyre specifications.



**21-inch Panamera SportDesign wheels with winter tyres**

**Details:** painted in silver colour.

The wheel centres shown are not included. They can be purchased as an additional item from the Tequipment accessories programme.

Available for all Panamera models.



**20-inch Exclusive Design wheels painted in satin platinum with winter tyres**

**Details:** painted in satin platinum with painted rim well. Includes wheel centres with full-colour Porsche Crest.

Available for all Panamera models.



**20-inch Exclusive Design wheels with winter tyres**

**Details:** painted in platinum silver with selected surfaces highly polished.

The wheel centres shown are not included. They can be purchased as an additional item from the Tequipment accessories programme.

Available for all Panamera models.



**20-inch Panamera Turbo wheels with winter tyres**

**Details:** painted in silver colour.

The wheel centres shown are not included. They can be purchased as an additional item from the Tequipment accessories programme.

Available for all Panamera models.



**19-inch Panamera wheels with winter tyres**

**Details:** painted in silver colour.

The wheel centres shown are not included. They can be purchased as an additional item from the Tequipment accessories programme.

Not compatible with Porsche Ceramic Composite Brake (PCCB).

Available for all Panamera models, except Panamera Turbo and Panamera Turbo Executive.



Please refer to our Tequipment accessories finder at [www.porsche.com/tequipment](http://www.porsche.com/tequipment) for information about all tyre specifications.

### General tyre information

All tyres fitted are designed exclusively for Porsche, as indicated by the special Porsche designation (NO, N1, etc.) on the sidewall. These are the only tyres recommended by Porsche. For logistical and technical reasons relating to the

production process, we are unable to accept orders for a particular make of tyre. The make of tyre may differ from that shown.

If the wheel and tyre combination is not included in your vehicle documents, please request a manufacturer's certificate from your Porsche Centre.

Please refer to our online Tequipment accessories finder at [www.porsche.com/tequipment](http://www.porsche.com/tequipment) for information about all wheel and tyre specifications.

### Fuel efficiency class, wet grip class, rolling noise:

Tyre type	Size	Fuel efficiency class/ rolling resistance	Wet grip class	External rolling noise* (class)	External rolling noise (dB)
Summer tyres	265/45 ZR 19	C-B	B-A	–	73–69
	295/40 ZR 19	C-B	B-A	–	75–70
	275/40 ZR 20	C	A		73–71
	315/35 ZR 20	C-B	A	–	73–70
	275/35 ZR 21	C	B-A		73–71
	315/30 ZR 21	C	B-A	–	75–70
All-season tyres	275/40 R 20	C-B	C-B	–	72–69
	315/35 R 20	C-B	C-B	–	74–69
	275/35 R 21	C	B		73–72
	315/30 R 21	B	B		75–74
Winter tyres	265/45 R 19	E-C	C-B		73–71
	295/40 R 19	F-C	C-B		75–73
	275/40 R 20	E-C	C-B		73–71
	315/35 R 20	C	C-B		74–73
	275/35 R 21	C	B		73
	315/30 R 21	C	B		73

\* Quiet rolling noise, Moderate rolling noise, Loud rolling noise.



### Note on the use of winter tyres

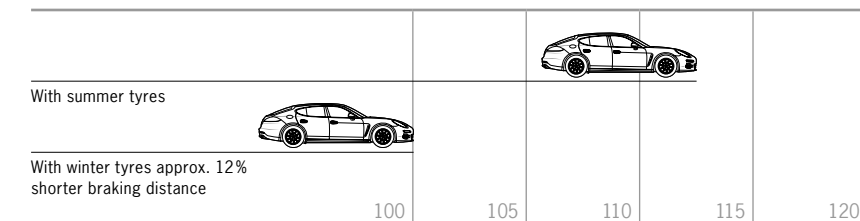
For summer tyres, winter starts when the temperature falls below approximately +7 °C. In this temperature range, the material begins to harden and braking distances are increased. Porsche therefore recommends using winter tyres in winter temperatures so that you can drive your Panamera with the level of safety that is

typical of Porsche, even during the winter months. All winter tyres approved by Porsche are identified by an 'N-rating' on the sidewall.

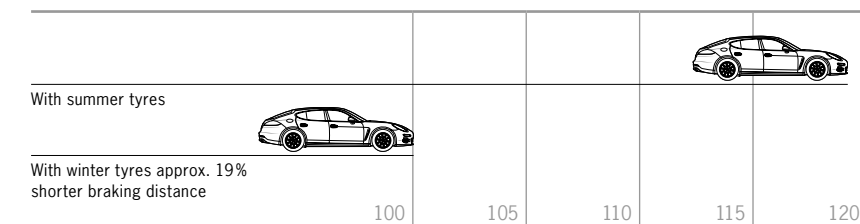
Benefits: the tyres have been optimised to produce less noise. The rolling resistance is lower, which reduces fuel consumption.

### How tyres influence braking performance:

#### Braking with ABS on a wet road surface (80–0 km/h) at +3 °C



#### Braking with ABS on snow (40–0 km/h)



Given as an example: braking distances in % (measured using tyres with Porsche specification). Braking distances optimised by the use of Porsche winter tyres. Absolute values may vary.



#### Crested tyre valve caps

Perfection down to the smallest detail. These tyre valve caps not only create an additional accent for your Porsche, they also protect the valves from dirt and moisture. Various versions are available.

#### Wheel centres

Wheel centres with full-colour Porsche Crest: a detail that adds the finishing touch to the wheels of your Porsche. Set of 4.

#### Wheel bolts in black including anti-theft protection

Set of 20 wheel bolts in black, 4 of which are anti-theft bolts. With highly secure Thatcham-approved locking system.




#### Anti-theft wheel protection

Set of 4 coded bolts in black.



#### Change-over zone: for your tyres

New season, new wheels. And a change to the right summer or winter tyres? The experts at Porsche Service will be happy to do this for you. As well as skilfully fitting your wheels, they will of course also undertake the professional storage and maintenance of your unused wheels and tyres if required. In addition to careful cleaning, this also includes a thorough visual inspection of the tyres and alloys. After all, your high-quality wheels deserve the best treatment – especially during their well-earned break.

 Please visit [www.porsche.com/service](http://www.porsche.com/service) for more information about the wheel and tyre service from Porsche Service.



## Interior, audio and communication

### Top athlete or comfortable companion? You determine the programme.

And you literally can. Add sporty highlights to the interior of your Panamera – with the carbon interior package and carbon multifunction sports steering wheel, for example. Or bring your infotainment system fully up-to-date with the new Porsche Rear Seat Entertainment which provides excellent entertainment in the back. The additionally available wireless Bluetooth® headphones provide an unrestricted sound experience. Because your car interior should be just as exciting as the adventures you undertake with your Panamera.





#### **Interior package in paldao<sup>1</sup>**

Would you like to make your Panamera even more personal? Even more refined? Or even sportier? The interior package in paldao<sup>1</sup> includes wooden decorative trims for the dashboard, front and rear doors as well as front and rear centre consoles. A special grain running through this elegant wood emphasises its high quality.



#### **Multifunction sports steering wheel (not including airbag module) in paldao<sup>1</sup> decorative wood finish**

The paldao<sup>1</sup> multifunction sports steering wheel has impressive looks and performance. You can control the audio and communication system, on-board computer, PDK<sup>2</sup> and telephone, if applicable, directly from the steering wheel using its multifunction controls. The steering wheel heating (on vehicles with optional heated steering wheel) can also be conveniently operated via a control

button on the steering wheel. The steering wheel rim is completed with a paldao<sup>1</sup> decorative wood finish and the wheel itself is covered in smooth-finish leather in the interior colour – lending it a particularly attractive and elegant look.

The airbag module is not included.

<sup>1</sup> Since wood is a natural product, there may be variations in colour and grain.

<sup>2</sup> 8-speed Porsche Doppelkupplung (PDK).



#### **Interior package in carbon**

Sporty courage. Even in the interior. The interior package in carbon delivers additional racing flair direct to the cockpit. The interior package in carbon includes carbon decorative trims for the dashboard, front and rear doors and front and rear centre consoles.



#### **Multifunction sports steering wheel (not including airbag module) in carbon**

Motorsport ambience alone is not enough, which is why the carbon multifunction sports steering wheel has both a sporty performance and excellent looks. You can operate a number of functions directly from the steering wheel using its multifunction controls. You can quickly and easily control the audio and communication

system, on-board computer, PDK<sup>1</sup> and telephone, if applicable. The steering wheel heating (on vehicles with optional heated steering wheel) can also be activated and adjusted via a control button on the steering wheel.

The airbag module is not included.

<sup>1</sup> 8-speed Porsche Doppelkupplung (PDK).



#### **Rear footrest**

The rear offers ample space and comfort – even for your feet. You can make yourself comfortable in the rear seats with this wedge-shaped footrest. Covered in black carpet, it also looks fantastic, thanks to the decorative side rails in Galvano Silver.

Only to be used with original Porsche floor mats.



#### **Floor mats with nubuck edging**

Precision down to the last detail: four made-to-measure floor mats in various interior colours with nubuck edging and 'PORSCHE' logo. A special mounting system on the driver and front passenger sides prevents the mats from slipping.

#### **Carbon floor mats with leather edging (not shown)**

These genuine carbon made-to-measure floor mats add a touch of motorsport glamour to the footwell. The mats have a distinctive carbon structure with smooth leather edging and black stitching. A black leather inlay with 'PORSCHE' logo further enhances the look.

Not available for Panamera Executive models.



#### **All-weather floor mats**

Four made-to-measure floor mats in an attractive design with a vehicle silhouette and 'PORSCHE' logo. Non-slip, water-repellent and waterproof with perimeter ridges. Available in the interior colours Marsala, Black and Luxor Beige.



#### **Vehicle key painted, key pouch in leather**

This set includes two painted side mouldings in selected exterior colours, together with the perfect finishing touch: a key pouch in smooth-finish leather – in a choice of interior colours. With 'PORSCHE' logo and decorative stitching. The stainless steel Porsche carabiner is extremely practical – for attaching additional keys.



### **Porsche Rear Seat Entertainment**

First-class entertainment: the latest generation of Porsche Rear Seat Entertainment prepares your Panamera for any entertainment scenario, making every journey a relaxed affair.

Only if the vehicle has preparation for Porsche Rear Seat Entertainment system or a pre-existing Porsche Rear Seat Entertainment system.

### **Contents**

Includes two high-resolution, anti-glare 10-inch touchscreens attached to the front seat backrests. The Porsche Rear Seat Entertainment system is removable, making it convenient to use outside the vehicle.

- HD video playback with 1,920 x 1,200 pixels
- Internal flash memory: 32 GB (expandable via Micro SD card)
- Micro SD card slot
- Micro USB port
- Integrated camera for video conferencing
- Operating system: GOOGLE® Android
- Processor: NVIDIA Tegra 4
- Audio output via integrated speaker, vehicle sound system or optional Porsche Bluetooth® headphones

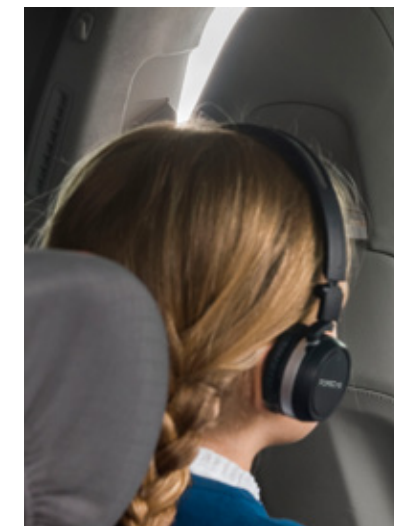
### **Connectivity**

- Bluetooth® 4.0
- Near field communication (NFC)
- WiFi 802.11n MIMO
- WiFi Direct

### **Use in the vehicle**

- For ease of operation, media playback on the Porsche Rear Seat Entertainment system can also be conveniently controlled from the front
- Playback of PCM media from SD card, Jukebox, or CD/DVD drive, USB stick or radio
- TV playback via the Porsche Rear Seat Entertainment system is possible in conjunction with an optional TV tuner
- Displays vehicle data
- Displays the current navigation route and additional information
- Destinations can be entered via the Porsche Rear Seat Entertainment system and transferred to PCM
- Access to all apps available in GOOGLE® Play Store<sup>1</sup>

<sup>1</sup> The Internet connection can be established via the Connect Plus module or by using a smartphone and/or tablet computer as a hotspot (tethering).



### **Porsche Bluetooth® headphones**

These Bluetooth® headphones, adorned with the 'PORSCHE' logo, enable wireless listening pleasure and can be connected to the Porsche Rear Seat Entertainment system via the Bluetooth® interface. The Bluetooth® headphones can be folded away in a practical storage bag and stowed in the car.

Includes rechargeable batteries.



# Transport, protection and car care

**The word transport contains the word sport.  
How sporty do you want to be?**

Are you a cosmopolitan person, family manager or extreme athlete? Whatever you're planning, you need the right accessories. Regardless of the adventure you intend to embark upon in your Panamera, Porsche Tequipment has the right transport solution.

After one journey there is always the next. Porsche Tequipment offers a wide range of protection and car care products that are ideally suited to your vehicle. After all, your Panamera should want for nothing.



**Cool box**

Easy-to-use cool box with 12 volt power connection and 12 litre capacity for food and drinks. Secured using the Porsche patented attachment system. Includes battery discharge protection.

**Luggage net (not shown)**

Floor net for holding items in the luggage compartment safely in position. This luggage net can be fastened to the lashing eyelets on the luggage compartment floor by means of four integral hooks. The net's highly elastic material enables you to vary its tensioning force. Easy to use.

**Luggage set**

This luggage set – consisting of two trolley cases, two travel bags and a beauty case – is designed to fit the luggage compartment of your Panamera exactly. All of the items are made from the same high-quality black leather that is used to cover your vehicle interior.

### Roof transport system

The roof transport system is compatible with all load-carrying attachments from Porsche Tequipment for a variety of purposes. Two lockable aluminium cross members provide effective protection against theft. The system is approved for a roof load of maximum 75 kg.

The opening angle of the tailgate may be restricted by long roof loads.

Not available for Panamera Executive models.



### Racing bike carrier

Racing bike carrier with quick-clamping device for the front fork and lengthways-adjustable rear wheel mount. The front wheel can be stowed in either the front wheel holder on the main support or in a bag inside the car. Also suitable for carbon-frame bikes. Up to three racing bike carriers can be mounted.

Not available for Panamera Executive models.



### Bike carrier

Lockable bike carrier for transporting all standard bikes with a frame diameter of up to 100mm. The anti-tipping mechanism holds the bicycle securely in position, making it easier to attach. Up

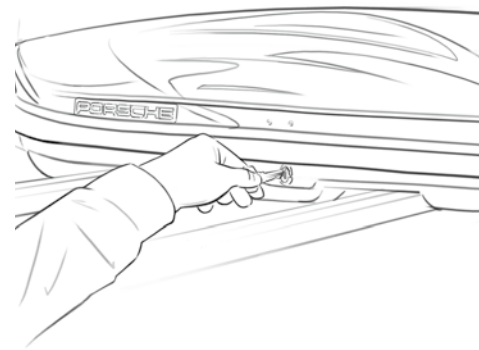
to three bike carriers can be mounted on the roof transport system.

Not available for Panamera Executive models.



#### ! DID YOU KNOW ...

... that our roof boxes have a locking system on both sides? This simplifies both the loading and unloading of the box. The system also ensures maximum transport safety, as the key can only be removed when the roof box is fully closed.



#### Out of the box also applies to our roof box.

Experiencing your own adventures. Achieving maximum sporty performance. Coping with everyday life. Sometimes, your life simply needs more space. Our roof boxes and transport systems allow you to easily adapt your Panamera to your life. And what about us? We ensure that all

Porsche Tequipment transport systems are designed for performance, just like your Porsche. And your life.

We therefore perform very accurate tests. Transport systems are actually more complex than many people think. Braking safety, noise levels and fuel consumption are just some of the important points that we test in Weissach. But we're

mainly concerned with ease of operation. After all, our roof boxes should quickly and securely meet all your transport requirements – allowing you more time for driving your Porsche. And if the boxes have suffered minor damage after intensive use: simply remove any dirt and slight scratches using Porsche paint polish.



**520 litre roof box**

Lockable plastic roof box and integrated ski carrier in platinum look or black (high-gloss) with a capacity of approximately 520 litres. Can be opened from either side. Length 2,180 mm, width 895 mm, height 400 mm.

Not available for Panamera Executive models.





**320 litre roof box**

Lockable plastic roof box in platinum look or black (high-gloss), with a capacity of approximately 320 litres. Synthetic mats at the bottom of the box help ensure it is securely loaded. Can be opened from either side. Length 2,060 mm, width 840 mm, height 340 mm.

Not available for Panamera Executive models.



#### Rear-mounted bike carrier

Lockable aluminium rear-mounted carrier in black for two bikes. Attaches quickly and easily on the towbar system without the need for any tools. The fold-down mechanism means that the tailgate can be fully opened even with the loaded bike carrier mounted. The rear-mounted bike carrier folds down compactly and can be easily transported thanks to the integrated carrying handle.

Only available in conjunction with the towbar system. Also suitable for eBikes (2 x 30 kg).

Not available for Panamera Executive models.



**Model:** Porsche Baby Seat  
+ ISOFIX Base<sup>1, 2</sup>  
**Group:** G 0+  
**Weight:** up to 13 kg  
**Age:** up to approx. 15 months

### Porsche child seats

The next big adventure sometimes starts on a very small scale. Right next to you in the front passenger seat. Or in the seat behind you in the rear. Either way, a Porsche isn't just for grown-ups, it's for little ones too. Which is why there are child seats from Porsche Tequipment.

The specially designed Porsche child seats are engineered to meet strict safety standards. They have been tested and approved specifically for Porsche cars. As a result, they provide protection and comfort for passengers up to 12 years of age. The fabrics are breathable, hypoallergenic and easy to clean. The covers are removable and washable. The child seats are black and grey with red piping.



The Panamera seating system provides ISOFIX child seat preparation as standard on the outside rear seats and as an option on the front passenger seat.

So Porsche child seats can be easily and securely connected to the seat. Alternatively, they can be attached using the three-point seat belt system. For extra safety, the Porsche Baby Seat and Porsche Junior Seat ISOFIX have an independent five-point seat belt system.

### Seat protector (not shown)

An additional protector is available to protect the vehicle seat from dirt or damage.

The use of a child seat on the front passenger seat is only permitted in conjunction with the child seat preparation available from the factory. The front passenger airbag must be deactivated if carrying a child up to 27 kg.

**Model:** Porsche Junior Seat ISOFIX<sup>1</sup>  
**Group:** G 1  
**Weight:** 9 to 18 kg  
**Age:** approx. 9 months to 4 years

<sup>1</sup> ISOFIX/ISOFIT is a safe and user-friendly child seat mounting system that rigidly attaches the child seat to the vehicle body.

<sup>2</sup> Separate Porsche Baby Seat Base ISOFIX, G 0+ option.

<sup>3</sup> Also available as Porsche Junior Plus Seat.



**Model:** Porsche Junior Plus Seat ISOFIT<sup>1, 3</sup>  
**Group:** G 2-G 3  
**Weight:** 15 to 36 kg  
**Age:** approx. 4 to 12 years







**Outdoor car cover**

Made-to-measure silver-coloured outdoor car cover with full-colour Porsche Crest and logo. This car cover is water-repellent

and protects your car from the effects of the weather, such as strong sunlight. Includes anti-theft protection.



**Indoor car cover**

Made-to-measure indoor car cover made from breathable, anti-static material. With full-colour Porsche Crest and 'PORSCHE' logo.



**Leather care set<sup>1</sup>**

Cleaning and care set for Porsche leather interiors in a convenient organiser bag. Contains leather cleaner (100ml), leather conditioner (100ml), sponges and cloths.



**Car care case<sup>1</sup>**

The very best car care products in a waterproof organiser bag with practical inside pockets. These high-quality interior and exterior car care products have been specially approved for Porsche cars.

Includes insect remover, car shampoo, paint polish, wax, interior and exterior glass cleaner, leather conditioner, cloths, sponges and chamois leather.



**Wheel cleaning kit<sup>1</sup>**

Cleaning and care kit for alloy wheels in a convenient organiser bag, comprising wheel cleaner (acid-free, 500ml bottle with spray head), sponge and three-piece brush set for stubborn dirt. The wheel cleaner is also available separately and in a 1,000ml refill bottle.

<sup>1</sup> All care products can also be purchased individually.



#### **Microfibre cleaning cloths**

For the effective and gentle cleaning of the PCM touchscreen and other delicate interior surfaces. Set of three microfibre cloths.



#### **Porsche Charge-o-mat Pro<sup>1</sup>**

The increased charging capacity (5.0 A) of the Porsche Charge-o-mat Pro shortens battery charging time. An additional charging mode means that it can also be used for the Porsche lightweight battery (lithium-ion).

#### **Porsche Charge-o-mat<sup>1</sup> (not shown)**

Battery charger (3.6 A) with charge preservation and battery monitoring function.

#### **Adapter for Porsche battery chargers (not shown)**

Adapter for vehicles without cigarette lighter.

<sup>1</sup> An adapter is available as an option for vehicles without cigarette lighter.

#### **Tool kit**

The tool kit for Porsche enthusiasts. This high-quality leather bag with embossed Porsche Crest contains a combination spanner set (8-piece) and socket wrench set (30-piece). The 55-piece kit also includes: long-nose pliers, voltage tester, plastic spatula, telescopic magnetic pick-up, Allen wrench set (9-piece), LED head torch, two pairs of gloves and a microfibre cloth.

Please note the Porsche warranty conditions. The improper use of the tools could invalidate warranty claims.



#### **High-visibility jacket**

This luminous yellow jacket with reflective stripes will keep you safe. It can be stowed in the glove compartment or other storage compartments, thanks to its compact packaging.

Carrying a high-visibility jacket is a legal requirement in many EU countries.

## Winter accessories



**Those of true character don't get cold feet.  
Not even in winter.**

The comfort zone – yours begins when others are already getting cold feet. Those with so much to do simply refuse to be stopped. Not by others. And certainly not by winter. You can go your own way whatever the season. With the right winter accessories from Porsche Tequipment.





**Ski/snowboard carrier, easy-loading**

For up to six pairs of skis or four snowboards (approx. 60 cm loading surface). This lockable ski/snowboard carrier is specially designed to fit the Porsche roof transport system and is therefore easy to mount. And the practical slide-out function ensures convenient loading and unloading.

Not available for Panamera Executive models.





#### Roof boxes

Lockable plastic boxes in black (high-gloss) or platinum look, with a capacity of approx. 320 or approx. 520 litres.

For more details about our roof boxes, please refer to pages 56–61.



#### Snow chains

Specially designed for Porsche models, with fine links and low adhesion of ice and snow. Set of two for the rear wheels.

Safe and sporty winter driving: please refer to pages 33–37 for all Porsche Tequipment wheels with winter tyres and important information about driver safety and fuel consumption.



#### Concentrated winter glass cleaner

Winter-proof your Panamera. This concentrated winter window cleaner (1,000ml bottle) not only protects the windscreen washers from frost, but can also be used to easily remove any winter-related dirt deposited on the windows.

#### Ice scraper

Maintain clear vision with this aluminium ice scraper with practical telescopic handle for easy removal of ice and snow. Integral rubber lip for removing water.



#### Designed to perform: whatever the season.

A Porsche responds to special attention, particularly in winter. Your perfect partner for this: Porsche Service. Because who better to look after your car than those who developed it? Our service specialists have the expertise to maintain both historic and classic cars, as well as current models. They are fully knowledgeable about each of our models and know how to maintain, repair and care for them correctly. As well as the very latest diagnostic technologies and special tools, they only ever use Porsche genuine parts. And, of course, they also ensure that all Tequipment products are professionally fitted and installed with typical Porsche performance.

🔍 Please visit [www.porsche.com/service](http://www.porsche.com/service) for more information about the service and offers from Porsche Service for your Panamera.



911 Carrera 4S (type 991): fuel consumption in l/100 km urban 13.8–12.4 · extra urban 7.6–7.0 · combined 9.9–9.1; CO<sub>2</sub> emissions combined in g/km 233–212



**Electrifying performance:  
the Panamera E-Hybrid models.**

Many manufacturers are concerned with e-mobility. But we go a decisive step further. Intelligent performance improvements typical of Porsche: called E-Performance. After all, we build sports cars – such as the Panamera E-Hybrid models. The result is impressive: high performance coupled with great efficiency and suitability for everyday use.

This requires efficient charging systems, with which you can conveniently charge your vehicle at home using the Porsche Charging Dock, for example. In combination with the right optional Porsche charging pedestal. The future has already begun: with Porsche E-Performance.

## E-Performance





### Charging Dock

The Porsche Charging Dock, the front of which is made of black safety glass with a silver 'PORSCHE' logo, can be used to install the Porsche Universal Charger (AC) on a garage wall, for example. It is suitable for all standard industrial electrical outlets. The Charging Dock has a port on both sides for the vehicle connector. The vehicle cable, up to 7.5 m long, can be wound around the housing and the charger removed at any time. Also suitable for outdoor installation. Lockable.

The Porsche Universal Charger (AC) shown in the picture and the optional charging cable are not included. Please contact your Porsche Centre for assembly information.



### Charging pedestal

Charge your vehicle easily and conveniently at home. This practical cradle – made of black safety glass with a brushed stainless steel frame and silver 'PORSCHE' logo – has been specially developed for Porsche, to enable the Charging Dock to be safely and conveniently mounted. The charging pedestal can be free-standing (fixed on a solid surface) and is particularly recommended if the Charging Dock cannot be mounted on a wall (dimensions: height 1670 mm, width 420 mm, depth 100 mm).

Assembly information is available from your Porsche Centre. The Charging Dock and charger are not included.



### Charging cable (mode 3)

For maximum flexibility, you can also charge your vehicle while out and about. Whether near a shopping centre, in a car park or at the roadside, many cities now have charging facilities available for public use. And with the growing number of plug-in hybrid and electric vehicles, the number of charging facilities will of course continue to increase.

The Porsche Tequipment charging cable (mode 3) enables you to charge your vehicle at a public charging facility using a type 2 connector (EU standard) quickly and conveniently. The black charging cable is 7.5 m long and suitable for currents up to 20 A (3-phase).

The charging equipment can be conveniently stored in the luggage compartment in the pouch with fastening system supplied.

If you need an additional power cable – for travelling abroad, for instance – please contact your Porsche Centre. They will be happy to advise you about the additional charging accessories available via the spare parts programme.

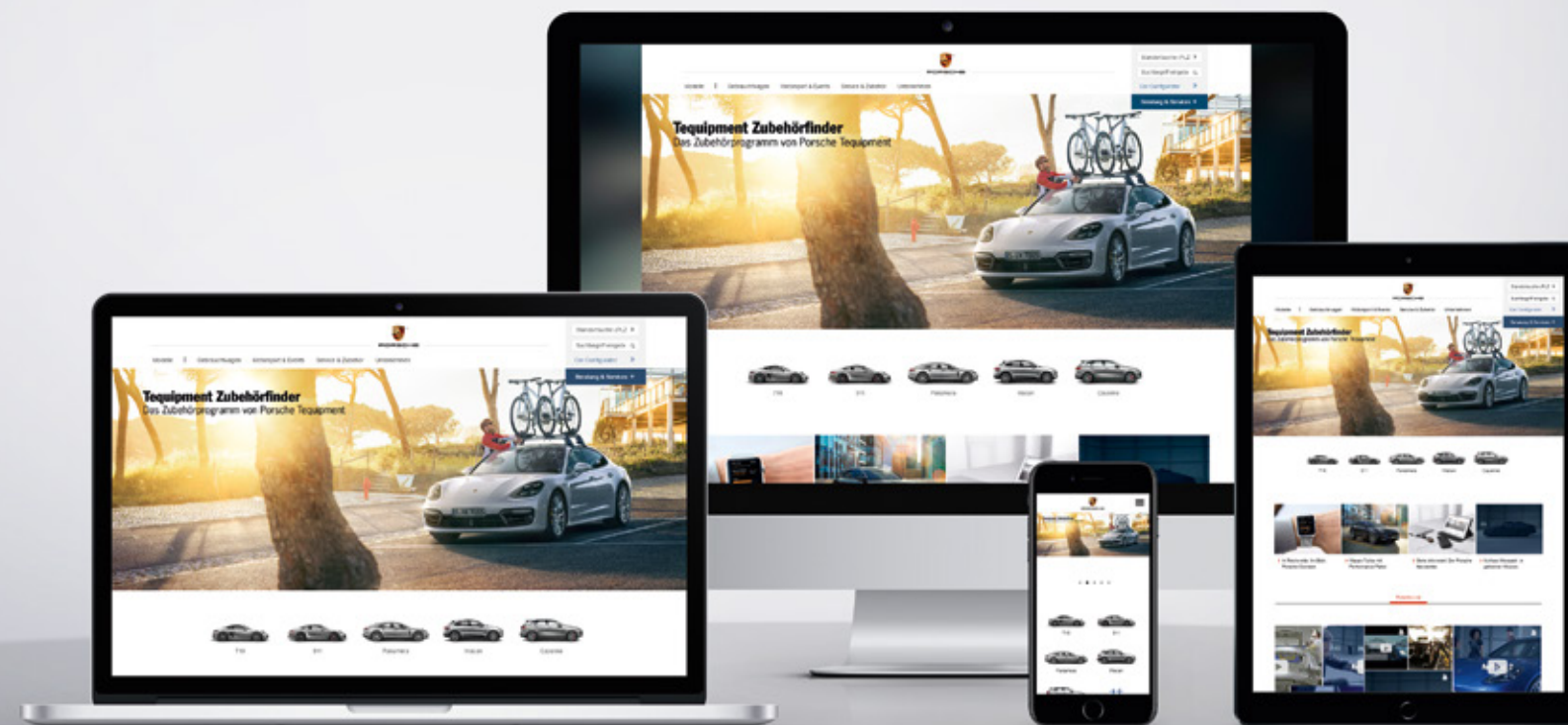


## The Porsche Tequipment range of accessories.

Your Panamera is perfectly suited to your life. And every Porsche Tequipment product allows you to further enhance it. We've already given you an overview of how you can adapt it to your needs after purchase. This journey of discovery continues online. At [www.porsche.com/tequipment](http://www.porsche.com/tequipment) you can discover all the products and options available for your model using the online Tequipment accessories finder.

Here, you will find all the important details about Tequipment genuine accessories. Of course, you can also get this information on the move because the Tequipment accessories finder can be conveniently used on all mobile devices – laptop, smartphone or tablet – anywhere, anytime. Inspiration included!

Prefer to be inspired in person? Then simply visit your nearest Porsche Centre, where our experts will be delighted to show you all the possibilities that Porsche Tequipment has to offer for your model.





## Porsche World

### Porsche Centres

Your Porsche Centre can assist you with every aspect of purchasing and owning your Porsche. You will also find a wide range of products and services, including genuine Porsche parts and top-quality accessories.

### Porsche Service

Your expert partner for all current Porsche models as well as old and modern classics, whether your car needs servicing, routine care or special repairs.

### Porsche Assistance

Enjoy peace of mind with our exclusive breakdown and accident recovery service. Membership is free when you buy a new Porsche.



### Porsche Exclusive

Realise your vision of the perfect Porsche with our factory customisation programme. From styling enhancements to performance upgrades, all modifications are uniquely handcrafted for your Porsche.

### Porsche Approved

So that our vehicles remain reliable and retain their value whether new or previously owned, all Porsche Approved cars meet the most stringent Porsche quality standards across the world. Each car is backed by the Porsche Approved warranty.



### Porsche Tequipment

Personalise your Porsche at any time after purchase with our range of aftermarket accessories. You will also find all our available products online at [www.porsche.com/tequipment](http://www.porsche.com/tequipment) using the Tequipment accessories finder.

### Porsche Financial Services

Discover our financial services and realise your dream of the sports car with the solutions we have to offer. Uncomplicated. Individual. Tailored.



### Porsche Driver's Selection

With leisurewear, model cars, timepieces, leather goods, luggage specifically tailored to Porsche luggage compartments and other intelligent accessories, there are plenty of opportunities to indulge your passion for Porsche off the road, too.

### Christophorus

Published five times a year, our magazine for Porsche owners offers news, interviews and a variety of features from throughout the world of Porsche. Visit [www.porsche.com/christophorus](http://www.porsche.com/christophorus) for a selection of online articles.



### Porsche Travel Club

Embark on a thrilling adventure and feel the power of Porsche. Stay in top-class hotels and dine in five-star restaurants – in the most beautiful places on Earth. To find out more, call +49 711 911-23360. E-mail: [info@porschetravelclub.de](mailto:info@porschetravelclub.de)

### Porsche Classic

Your specialist source for genuine Porsche parts as well as restoration services for all Porsche classics. Visit [www.porsche.com/classic](http://www.porsche.com/classic) to find out more.



### Porsche Sport Driving School

Develop your skill and explore your Porsche with the Porsche Sport Driving School. Learn about events at some of the world's most famous racing venues, call +49 711 911-23364. E-mail: [info@porschessportdrivingschool.de](mailto:info@porschessportdrivingschool.de)

### Porsche Museum

More than 80 vehicles at our headquarters in Stuttgart-Zuffenhausen await to take you on a journey through Porsche history. See icons such as the 356, 911 and 917 presented in an atmosphere you can't experience anywhere else.

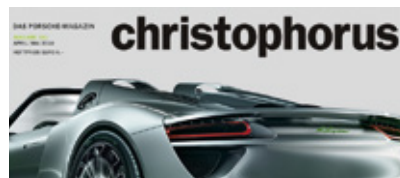
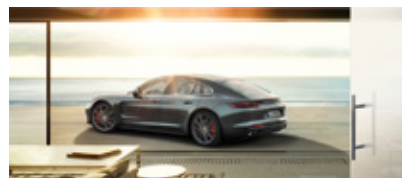


### Porsche Clubs

Since the first Porsche Club was founded in 1952, their number has grown to 660 with a total of 195,000 members worldwide. To find out more, go to [www.porsche.com/clubs](http://www.porsche.com/clubs) or call +49 711 911-23250. E-mail: [communitymanagement@porsche.de](mailto:communitymanagement@porsche.de)

### Porsche Online

Go to [www.porsche.com](http://www.porsche.com) for all the latest news and information from Porsche.



You can obtain the latest brochures for Porsche Driving Experience and Porsche Driver's Selection from your Porsche Centre.



# Index

<b>Exterior and performance</b>	<b>Page</b>	<b>Wheels and accessories</b>	<b>Page</b>	<input type="checkbox"/> Crested tyre valve caps	38	<input type="checkbox"/> Multifunction sports steering wheel		<input type="checkbox"/> Rear-mounted bike carrier	62	<input type="checkbox"/> Porsche Charge-o-mat Pro	70	<input type="checkbox"/> Roof boxes	77
<input type="checkbox"/> SportDesign package	8	<b>Wheels with summer tyres:</b>		<input type="checkbox"/> Wheel centres	38	(not including airbag module) in carbon	45	<input type="checkbox"/> Porsche child seats	64	<input type="checkbox"/> Porsche Charge-o-mat	70	<input type="checkbox"/> Snow chains	77
<input type="checkbox"/> SportDesign package painted in black (high-gloss)	11	<input type="checkbox"/> 21-inch Exclusive Design	28/29	<input type="checkbox"/> Wheel bolts in black including anti-theft protection	38	<input type="checkbox"/> Rear footrest	46	<input type="checkbox"/> Seat protector	65	<input type="checkbox"/> Adapter for Porsche battery chargers	70	<input type="checkbox"/> Concentrated winter glass cleaner	78
<input type="checkbox"/> Tinted LED taillights including light strip	14	<input type="checkbox"/> 21-inch Panamera SportDesign	30	<input type="checkbox"/> Anti-theft wheel protection	38	<input type="checkbox"/> Floor mats with nubuck edging	46	<input type="checkbox"/> Outdoor car cover	66	<input type="checkbox"/> Tool kit	71	<input type="checkbox"/> Ice scraper	78
<input type="checkbox"/> SportDesign sideskirts	15	<input type="checkbox"/> 20-inch Panamera Turbo	31	<b>Interior,</b>		<input type="checkbox"/> Carbon floor mats with leather edging	46	<input type="checkbox"/> Indoor car cover	67	<input type="checkbox"/> High-visibility jacket	71	<b>E-Performance</b>	<b>Page</b>
<input type="checkbox"/> Exterior mirrors painted	16	<input type="checkbox"/> 20-inch Panamera Design	32	<b>audio and communication</b>	<b>Page</b>	<input type="checkbox"/> All-weather floor mats	47	<input type="checkbox"/> Car care case	68	<b>Winter accessories</b>	<b>Page</b>	<input type="checkbox"/> Charging Dock	82
<input type="checkbox"/> Air outlet trims painted	16	<b>Wheels with winter tyres:</b>		<input type="checkbox"/> Interior package in paldao	43	<input type="checkbox"/> Vehicle key painted, key pouch in leather	47	<input type="checkbox"/> Wheel cleaning kit	69	<input type="checkbox"/> Ski/snowboard carrier, easy-loading	74	<input type="checkbox"/> Charging pedestal	83
<input type="checkbox"/> Sports tailpipes in silver colour	17	<input type="checkbox"/> 21-inch Panamera SportDesign	33	<input type="checkbox"/> Multifunction sports steering wheel (not including airbag module) with paldao decorative wood finish	43	<input type="checkbox"/> Porsche Rear Seat Entertainment	48	<input type="checkbox"/> 520 litre roof box	58			<input type="checkbox"/> Charging cable (mode 3)	84
<input type="checkbox"/> Sports tailpipes in black	17	<input type="checkbox"/> 20-inch Exclusive Design	33/34	<input type="checkbox"/> Interior package in carbon	45	<input type="checkbox"/> Porsche Bluetooth® headphones	49	<input type="checkbox"/> 320 litre roof box	61				

Panamera, Panamera 4, Panamera 4 Executive, Panamera 4S, Panamera 4S Executive, Panamera 4S Diesel, Panamera Turbo, Panamera Turbo Executive:

fuel consumption in l/100 km urban 13.1–7.9 · extra urban 7.4–5.8 · combined 9.5–6.7; CO<sub>2</sub> emissions in g/km combined 217–171

Panamera 4 E-Hybrid and Panamera 4 E-Hybrid Executive:

fuel consumption in l/100 km combined 2.5; electricity consumption in kWh/100 km combined 15.9; CO<sub>2</sub> emissions in g/km combined 56

Errors and omissions excepted.  
Subject to change without notice.

Dr. Ing. h.c. F. Porsche AG supports the use of paper from sustainable forests. The paper for this brochure is certified in accordance with the strict regulations of the PEFC (Programme for the Endorsement of Forest Certification).

Porsche, the Porsche Crest, Panamera, 911, Cayenne, PCM, PCCB, PDK, Tequipment, Exclusive and other marks are registered trademarks of Dr. Ing. h.c. F. Porsche AG  
Porscheplatz 1  
70435 Stuttgart  
Germany

© Dr. Ing. h.c. F. Porsche AG, 2016

Edition: 11/2016  
Printed in Germany  
WSLP1701000128 EN/EU