



PORSCHE



Exclusive Cayman
Ultimate personalisation

Contents

Philosophy	6
Exclusive examples	8
Colours and materials	26
Exclusive options	28
Exclusive expertise	44
Designing your Porsche	48
Porsche Car Configurator	49
Panorama	50



Cayman S with exterior package painted, headlight cleaning system covers painted, 20-inch SportTechno wheels

Philosophy

Why shouldn't you make something special even more special?

Ferry Porsche once said, "We think it's more important to make especially good cars than to make an especially large number of them."

A way of thinking that's traditional at Porsche, and one that you will still find here today. Since 1986, under the name Porsche Exclusive, we have been dedicated to fulfilling our customers' special wishes and developing unique vehicles, bringing ultimate personalisation to the road. Because the possibilities of tailoring the design and performance of your Porsche to produce a distinctive, one-off creation are practically inexhaustible.

In addition to using the best materials like leather, Alcantara, carbon, wood and aluminium, our most vital commodity is our craftsmanship. It is only by using our hands that we can meet our own high requirements, when applying leather, painting or polishing. Or when tailoring and stitching or when assembling parts in our Exclusive manufacturing process. Always taking the appropriate amount of time. Or, in other words, with the greatest care, composure, concentration, passion and devotion. To result in a consistent concept, right down to the smallest detail. Truly a one-off creation. Your Porsche.

Material composition: leather, carbon, wood, aluminium and Alcantara



Exclusive examples

**We'll never stop making dreams come true.
Let's shake on it.**

Our challenge is to realise your dream car, just the way you envisioned it. With visual and technical enhancements for the interior and exterior, from a single alteration to extensive modifications. Tell us what you would like and we will do our utmost to make it happen, provided that it is technically feasible and does not compromise on quality.

We can make your vehicle even sportier, even more comfortable and even more individual. What can you expect? Originality, inspiration and enthusiasm, beginning as early as the consultation. Focusing on what is most important: your particular wishes. Even with the choice of materials. Whether high-quality leather, Alcantara, wood, aluminium or carbon – we give every detail our full attention.

The following examples are intended to inspire you. Give free rein to your imagination and then create your complete dream car at your Porsche Centre or online with the Porsche Car Configurator. The Porsche Exclusive team at our Customer Centres in Zuffenhausen and Leipzig will be happy to help.

Useful information on how to design your Porsche can be found on page 48. Turn to page 50 or visit www.porsche.com to find lots of interesting facts from the world of Porsche.

Cayman S with SportDesign package, rear side air intake grilles painted in black, exterior mirror lower trims painted in black, tinted taillights, sports tailpipes, model designation on doors in black, wheels painted in satin platinum (complete)



Cayman S

Agate Grey Metallic

Why should you have to limit your yearning for freedom?

It goes without saying that a Cayman S is a Porsche. And it doesn't need mentioning that a Porsche is a unique sports car. And yet, everything can be further enhanced. The personalisation and the sportiness. Combined uncompromisingly in the Cayman S in Agate Grey Metallic.

It's already evident from the sports chassis with the 20 mm lower bodyshell: this Cayman is sporty. Very sporty. Crouched low on 20-inch Carrera S wheels featuring centre spokes with a black-painted finish, ready to pounce at any time. This ambition is emphasised even more by the sports exhaust system.

The exterior package, painted in black, lends a visual contrast to the paintwork in Agate Grey Metallic. This includes the rear side air intake grilles, the rear apron and the exterior mirror lower trims. If you like, we can also paint the headlight cleaning system covers.

To match: black model designation on the doors and the tinted LED taillights. It goes without saying that you can also add more personalisation options for the interior.

- 1 Sports chassis (20 mm lower), exterior package painted in black, tinted taillights, sports exhaust system
- 2 Model designation on doors in black, wheels painted in black (partially)
- 3 Interior package in carbon, heated multifunction steering wheel in carbon, centre console trim in carbon, PCM package in leather, air vent slats in leather, Sport Chrono stopwatch instrument dial in Racing Yellow, seat belts in Racing Yellow, storage compartment lid with model logo

Visit www.porsche.com/exclusive to find out everything you need to know about configuring this unique vehicle.



1



2



3

The interior of this unique vehicle is predominantly leather, in Agate Grey – to match the exterior colour. A luxurious ambience is created, for example, by the dashboard trim and door trim package in leather, the PCM package in leather and the rear-view mirror in leather. Even the air vent slats are in leather. The storage compartment lid boasts the model logo.

A homage to racing sport: carbon. This high-tech material is used in the interior package, the multifunction steering wheel and the centre console trim.

Vindication of a full-blooded sports car just raring to go can also be seen in the Sports bucket seats with moulded a Porsche crest on the headrests, and the Racing Yellow seat belts. The dials on the instrument cluster and on the Sport Chrono stopwatch are also in Racing Yellow.

We could continue describing what makes this car so unique however, we would rather let the pictures do the talking – and leave you to enjoy it. With the key pouch in leather and the painted vehicle key in your hand.

- 1 Tinted taillights, wheels painted in black (partially)
- 2 Heated multifunction steering wheel in carbon, instrument cluster dials in Racing Yellow, Sport Chrono stopwatch instrument dial in Racing Yellow, air vent slats in leather, vehicle key painted
- 3 Interior package in carbon, centre console trim in carbon, PCM package in leather
- 4 Sports chassis (20 mm lower), exterior package painted in black, model designation on doors in black, wheels painted in black (partially)

Visit www.porsche.com/exclusive to find out everything you need to know about configuring this unique vehicle.



Cayman S

Racing Yellow

As far as the design is concerned we've not heard the final word.

Extravagant? Sporty? Both. And most certainly unconventional. Compromises? Certainly not. Actually, it's precisely these properties that make the Cayman S so special and sought after – exactly as it should be. Or, to put it more clearly, exactly how you want it to be. After all, you make the final decision where the design is concerned.

Simply follow your taste – and its forward impetus. The Cayman S is just as distinctive as your imagination and originality. Let's take the Cayman S in Racing Yellow for example. An exterior colour which, together with the

SportDesign package, alludes to its high dynamics right from the first glance. What about the second glance? Proof that harmony can be full of suspense. The evidence: tinted taillights and model logo in the contrasting colour of black on both doors. Accompanied by both the rear side air intakes as well as the exterior mirror lower trims painted in black. Add the distinctive sports tailpipes and the dynamic character of your Cayman S in Racing Yellow, and it comes into its own – even when stationary.

- 1 SportDesign package, rear side air intake grilles painted in black, exterior mirror lower trims painted in black, model designation on doors in black, wheels painted in satin platinum (complete)
- 2 SportDesign package, tinted taillights, sports tailpipes
- 3 Centre console trim painted, PCM package painted, SportDesign steering wheel in Alcantara, PDK gear selector in Alcantara, air vent slats painted, instrument cluster dials in Racing Yellow, Sport Chrono stopwatch instrument dial in Racing Yellow, storage compartment lid with Porsche Crest, seat belt buckles in leather

Visit www.porsche.com/exclusive to find out everything you need to know about configuring this unique vehicle.



Not enough for you? Then add an extra contrast with wheels painted in satin platinum.

Inside or outside? It really doesn't matter to a true athlete. That's why the ergonomically designed interior is also aimed at performance and individuality. You can adapt virtually any element to your own requirements. How about having the Porsche Crest embossed on the headrests? Or you could reflect the exterior colour on the inside. You can finish the centre console trim or the PCM surround in Racing Yellow, the same as

the round instrument dials, with the painted air vent slats to match. In addition, the aluminium pedals and footrests in the footwell make a distinctive design statement.

You can already look forward to the result. A Cayman S built just the way you expect it to be, according to the code of the curve – and completed to meet your specific requirements. Really, just as it should be. Consistently Porsche – consistently you.

- 1 Pedals and footrest in aluminium
- 2 PCM package painted, SportDesign steering wheel in Alcantara, PDK gear selector in Alcantara
- 3 Air vent slats painted, centre console trim painted, Sport Chrono stopwatch instrument dial in Racing Yellow
- 4 SportDesign package, rear side air intake grilles painted in black, exterior mirror lower trims painted in black, tinted taillights, sports tailpipes, model designation on doors in black, wheels painted in satin platinum (complete)

Visit www.porsche.com/exclusive to find out everything you need to know about configuring this unique vehicle.



1



2



3



4

Cayman S

Rhodium Silver Metallic

**The only limit is your imagination.
Why not unleash it.**

Right from its launch in 2005, there has only ever been one route for the Cayman – the direct one to the next corner. Along the way, it makes no compromises, refuses to go with the flow and has just one goal in mind – to thrill the very soul of its driver. The result is an unmistakable sports car with an unmistakable character.

It means there is no room for run-of-the-mill solutions and no time for diversions. The focus is very much on what matters, namely driving pleasure and performance. Or rather on enhancing both. It's a unique stance, and one that is immediately apparent when looking at the exterior of the Cayman S. Its muscular lines and sporty details lend the car a

dynamic presence. One which you can enhance even further if you unleash your imagination. An exterior in Rhodium Silver Metallic is just one example.

The consistency and single-mindedness with which the car pursues its goals is reflected in every perspective. For example, the rear apron and the sporty rear side air intake grilles are in the exterior colour. The headlight cleaning system covers and the exterior mirror lower trims are likewise finished in the same Rhodium Silver Metallic, to lend even greater emphasis to the car's dynamic character. Pure athleticism cannot be expressed in a more refined, succinct form than this.

1 Exterior package painted, headlight cleaning system covers painted, 20-inch SportTechno wheels

2 Rear side air intake grilles painted

3 Interior package in brushed aluminium, centre console trim in brushed aluminium, dashboard and door trim packages in leather, instrument surround in leather, rear-view mirror in leather, air vent slats in leather, steering column casing in leather, PCM package in leather, storage compartment lid with model logo

Visit www.porsche.com/exclusive to find out everything you need to know about configuring this unique vehicle.



The Cayman has a powerful, robust, sporty sound which can be enhanced even more with the addition of the sports exhaust system. The sports tailpipes adds a particularly dynamic edge to the overall look, as indeed do the decidedly muscular 20-inch SportTechno wheels. They take the Cayman S in the only direction it wants to go: the next corner.

The interior also very much emphasises the performance, as demonstrated by the interior package in brushed aluminium. Trim elements on the dashboard, door panels and centre console are made from aluminium, as is the gear lever inlay.

As you would expect from an athlete, a consistent and focused approach has been taken.

High-quality leather design elements, such as the steering column casing and the PCM, provide dynamic contrasting touches. The storage compartment lid bears the model logo and the Porsche Crest is embossed on the Sports seats Plus.

Regardless of where your journey leads you, the Cayman S, with its illuminated stainless steel door sill guards, ensures that you get off to an athletic start. And that together you follow the code of the curve, right to your destination.

- 1 Exterior mirror lower trims painted, headlight cleaning system covers painted
- 2 Illuminated stainless steel door sill guards
- 3 Centre console trim in brushed aluminium, PCM package in leather
- 4 Exterior package painted, sports exhaust system, 20-inch SportTechno wheels

Visit www.porsche.com/exclusive to find out everything you need to know about configuring this unique vehicle.



Cayman S

White

The rules of physics are clearly defined. Everything else is up to you.

Even the Cayman S cannot defy the laws of physics. But it can push them to the limits – even redefine them. And it does so with just one goal in mind. To go its own way, shunning customary concepts and conventions. Corner after corner.

It takes conviction to build such an uncompromising sports car, and a particular flair to create a unique design. The Cayman S in White epitomises both.

That drive for exclusivity and individuality is very much evident right from first glance.

And right down to the smallest of details too. Before you get in, look at the black model designations on the doors. The lower trims of the exterior mirrors, the rear side air intake grilles and the headlight cleaning system covers are painted black to match. The rear apron is in the exterior colour.

Tinted taillights add an impressive finishing touch. While the sports tailpipes accentuates the unmistakable sporty character of the Cayman S.

- 1 Exterior mirror lower trims painted in black, rear side air intake grilles painted in black, headlight cleaning system covers painted in black, model designation on doors in black, 20-inch SportTechno wheels painted in black (partially)
- 2 Model designation on doors in black, tinted taillights, rear apron painted, sports tailpipes, 20-inch SportTechno wheels painted in black (partially)
- 3 Interior package painted, centre console trim painted, PCM package painted, instrument cluster dials in white, Sport Chrono stopwatch instrument dial in white, dashboard trim and door trim package in leather, rear-view mirror in leather, air vent slats in leather, steering column casing in leather, storage compartment lid with Porsche Crest, seat belt buckles in leather

Visit www.porsche.com/exclusive to find out everything you need to know about configuring this unique vehicle.



Anyone wanting to go their own way needs to adopt a clear stance – and a presence to match. The muscular 20-inch SportTechno wheels, featuring centre spokes with a black-painted finish, ensure you have both.

In the interior, the high-quality natural leather appointments in Espresso reveal the car's elegant side. Far from being a contradiction in terms, this is simply one more challenge that the Cayman S has skilfully mastered.

Both the centre console trim and the PCM package and the trims on the dashboard and doors are painted in white for an especially stylish look. The steering

column casing and even the air vent slats all feature meticulously handcrafted leather trim to enhance the exclusive ambience. The personalised floor mats also have leather edging, whilst the headrests of the Sports seats Plus and the storage compartment lid are embossed with the Porsche Crest.

Passion for detail can be seen right before your eyes as the dials on the instrument cluster and on the Sport Chrono stopwatch are in white.

If you would like to further personalise the interior, the possibilities are as diverse as your wishes.

- 1 20-inch SportTechno wheels featuring centre spokes with a black-painted finish
- 2 Centre console trim painted, storage compartment lid with Porsche Crest, seat belt buckles in leather
- 3 Air vent slats in leather, Sport Chrono stopwatch instrument dial in white
- 4 Steering column casing in leather

Visit www.porsche.com/exclusive to find out everything you need to know about configuring this unique vehicle.



Colours and materials

**Our engineering skill.
Your imagination.
An exclusive combination.**

We can offer a comprehensive selection of colours and materials for you to choose from when designing your new Porsche. A range of colours to sample for the interior and exterior are available, as are high-quality materials such as leather, Alcantara, elegant mahogany²⁾, carbon or aluminium to enhance the interior. You can find out what is possible at your Porsche Centre. Alternatively, you could visit one of our Customer Centres in Zuffenhausen or Leipzig, where we would be pleased to assist you directly and give you the exclusive advice you need (see page 48).



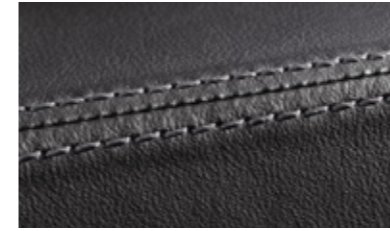
Some examples of colour to sample paints¹⁾



Some examples of colour to sample leathers¹⁾

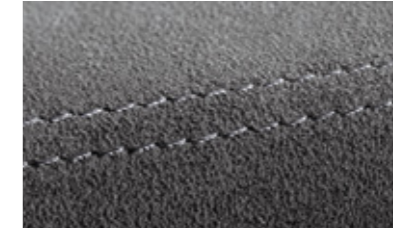
¹⁾ Must be technically feasible and meet Porsche quality requirements.

²⁾ Since wood is a natural product, there may be variations in colour and grain.



Leather

Leather is a traditional natural material – a true classic. Items made of leather are both timeless and hard-wearing.



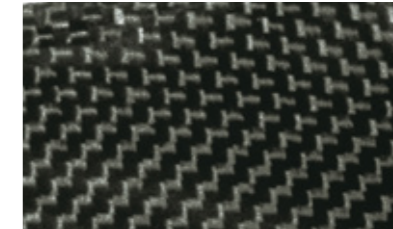
Alcantara

This high-quality material is easy to care for, washable and has excellent non-slip properties.



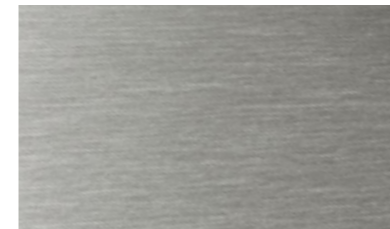
Mahogany²⁾

Mahogany is a dark, fine wood. Its fine grain gives it a very modern and elegant look.



Carbon

Carbon is a light but highly durable material which has its origins in motorsport. Its sporty look is the ideal complement to the car's race bred engineering.



Aluminium

Brushed aluminium sets clear accents and gives the interior a sporty, minimalist appearance.

Exclusive options

Option	Cayman	Cayman S	Cayman GTS	Cayman GT4	Order no.	Page
Exterior.						
• SportDesign package	<input type="radio"/>	<input type="radio"/>	<input checked="" type="radio"/> ¹⁾	–	XAT	14, 29
• Exterior package painted ²⁾	<input type="radio"/>	<input type="radio"/>	–	–	DBR	18, 21
• Rear side air intake grilles painted ²⁾	<input type="radio"/>	<input type="radio"/>	<input type="radio"/>	–	CAC	4, 14, 18
• Exterior mirror lower trims painted ²⁾	<input type="radio"/>	<input type="radio"/>	<input type="radio"/>	–	CNL	Title, 20, 29
• Rear apron painted ²⁾	<input type="radio"/>	<input type="radio"/>	–	–	CNG	10, 21, 22
• Headlight cleaning system covers painted	<input type="radio"/>	<input type="radio"/>	<input type="radio"/>	<input type="radio"/>	XUB	4, 20, 29
• Headlight cleaning system covers painted in a contrasting exterior colour	<input type="radio"/>	<input type="radio"/>	<input type="radio"/>	–	CGU	Title, 22
• Tinted taillights	<input type="radio"/>	<input type="radio"/>	<input checked="" type="radio"/>	–	XXR	10, 12, 14
• Model designation on doors in black	<input type="radio"/>	<input type="radio"/>	–	–	CAS	Title, 10, 13
• Model designation on doors in silver	<input type="radio"/>	<input type="radio"/>	–	–	CAT	–
• Fuel filler cap in aluminium look	<input type="radio"/>	<input type="radio"/>	<input type="radio"/>	<input type="radio"/>	XYB	–

¹⁾ With GTS-specific paint finish.

²⁾ Painted in exterior colour, unless otherwise specified at the time of ordering.

Please refer to your Porsche Centre for information about painting in contrasting exterior colours.

– not available number/extra-cost option standard available at no extra cost

More detailed information on individual equipment and equipment packages can be found in the respective vehicle price list.

For fuel consumption, CO₂ emissions and efficiency class, please refer to page 52.



1 Exterior mirror lower trims painted
2 Headlight cleaning system covers painted
3, 4 SportDesign package

Option	Cayman	Cayman S	Cayman GTS	Cayman GT4	Order no.	Page
Engine, transmission, chassis and wheels.						
• Sports chassis (20 mm lower)	<input type="checkbox"/>	<input type="checkbox"/>	<input type="checkbox"/>	–	X73	10, 13
• Sports tailpipes	<input type="checkbox"/>	<input type="checkbox"/>	<input type="checkbox"/>	–	XLS	8, 14, 22
• Sports exhaust system	<input type="checkbox"/>	<input type="checkbox"/>	<input checked="" type="checkbox"/>	<input checked="" type="checkbox"/>	XLF	10, 21
• 20-inch SportTechno wheels ¹⁾	<input type="checkbox"/>	<input type="checkbox"/>	<input type="checkbox"/>	–	XRT	4, 21, 31
• Wheels painted in black (partially) ¹⁾	<input type="checkbox"/>	<input type="checkbox"/>	<input type="checkbox"/>	–	XDA	10, 13, 24
• Wheels painted in exterior colour (partially) ¹⁾	<input type="checkbox"/>	<input type="checkbox"/>	<input type="checkbox"/>	–	XD9	31
• Wheels painted in satin platinum (complete) ²⁾	<input type="checkbox"/>	<input type="checkbox"/>	<input type="checkbox"/>	–	XDH	8, 17, 31
• Wheels painted in high-gloss black (complete) ³⁾	<input type="checkbox"/>	<input type="checkbox"/>	<input type="checkbox"/>	–	XDG	31
• Wheels painted in satin black (complete) ⁴⁾	–	–	–	<input type="checkbox"/>	XDK	–

¹⁾ Includes wheel centres with full-colour Porsche Crest.

²⁾ Only in conjunction with 20-inch Carrera S wheels. Includes wheel centres with full-colour Porsche Crest.

³⁾ Only in conjunction with 20-inch 911 Turbo wheels. Includes wheel centres with full-colour Porsche Crest.

⁴⁾ Only in conjunction with 20-inch GT4 wheels. Includes wheel centres with full-colour Porsche Crest.

– not available I number/extra-cost option • standard available at no extra cost

More detailed information on individual equipment and equipment packages can be found in the respective vehicle price list.

For fuel consumption, CO₂ emissions and efficiency class, please refer to page 52.



1



2



3



4

1 20-inch SportTechno wheel

2 Wheel painted in exterior colour (partially)

3 Wheel painted in high-gloss black (complete)

4 Wheel painted in satin platinum (complete)

Option	Cayman	Cayman S	Cayman GTS	Cayman GT4	Order no.	Page
Interior.						
• Interior package painted	<input type="radio"/>	<input type="radio"/>	<input type="radio"/>	<input type="radio"/>	EER/EET ¹⁾	23, 33
• Sport Chrono stopwatch instrument dial coloured						
Luxor Beige	<input type="radio"/>	<input type="radio"/>	<input type="radio"/>	<input type="radio"/>	CZT	–
Racing Yellow	<input type="radio"/>	<input type="radio"/>	<input type="radio"/>	<input type="radio"/>	CGE	11, 13, 17
White	<input type="radio"/>	<input type="radio"/>	<input type="radio"/>	<input type="radio"/>	CGJ	23, 33
Guards Red	<input type="radio"/>	<input type="radio"/>	<input type="radio"/>	<input type="radio"/>	CGG	–
• Instrument dials coloured						
Luxor Beige	<input type="radio"/>	<input type="radio"/>	<input type="radio"/>	<input type="radio"/>	XFL	–
Racing Yellow	<input type="radio"/>	<input type="radio"/>	<input type="radio"/>	<input type="radio"/>	XFR	13, 15
White	<input type="radio"/>	<input type="radio"/>	<input type="radio"/>	<input type="radio"/>	XFJ	33
Guards Red	<input type="radio"/>	<input type="radio"/>	<input type="radio"/>	<input type="radio"/>	XFG	–
• PCM package painted ²⁾	<input type="radio"/>	<input type="radio"/>	<input type="radio"/>	<input type="radio"/>	CUF	15, 17, 33
• Air vent slats painted ²⁾	<input type="radio"/>	<input type="radio"/>	<input type="radio"/>	<input type="radio"/>	CDN	15, 17
• Centre console trim painted	<input type="radio"/>	<input type="radio"/>	<input type="radio"/>	<input type="radio"/>	XYG	15, 17, 33
• Sports bucket seat belt passages painted ²⁾	<input type="radio"/>	<input type="radio"/>	<input type="radio"/>	<input type="radio"/>	CMT	–
• Vehicle key painted ²⁾	<input type="radio"/>	<input type="radio"/>	<input type="radio"/>	<input type="radio"/>	CPK	13, 33

¹⁾ EET not available for the Cayman GTS.

²⁾ Painted in exterior colour, unless otherwise specified at the time of ordering.

Please refer to your Porsche Centre for information about painting in contrasting exterior colours.

– not available 1 number/extra-cost option standard available at no extra cost

More detailed information on individual equipment and equipment packages can be found in the respective vehicle price list.



1



2



3

1 Interior package painted, PCM package painted, instrument dials in white, Sport Chrono stopwatch instrument dial in white, centre console trim painted, vehicle key painted

2 Centre console trim painted

3 PCM package painted

Option	Cayman	Cayman S	Cayman GTS	Cayman GT4	Order no.	Page
Interior.						
• Seat belts in Silver Grey	<input type="checkbox"/>	<input type="checkbox"/>	<input type="checkbox"/>	<input type="checkbox"/>	XSH	–
• Guards Red	<input type="checkbox"/>	<input type="checkbox"/>	<input type="checkbox"/>	<input type="checkbox"/>	XSX	–
• Racing Yellow	<input type="checkbox"/>	<input type="checkbox"/>	<input type="checkbox"/>	<input type="checkbox"/>	XHN	11
• Luxor Beige	<input type="checkbox"/>	<input type="checkbox"/>	<input type="checkbox"/>	–	XHP	–
• Yachting Blue	<input type="checkbox"/>	<input type="checkbox"/>	<input type="checkbox"/>	–	XHR	–
Interior: leather.						
• Leather interior package	<input type="checkbox"/>	<input type="checkbox"/>	<input type="checkbox"/>	–	EEA/EES ¹⁾	35
• Dashboard trim package in leather	<input type="checkbox"/>	<input type="checkbox"/>	<input type="checkbox"/>	–	CZW	19, 23, 35
• Door trim package in leather	<input type="checkbox"/>	<input type="checkbox"/>	<input type="checkbox"/>	–	CXM	19, 23, 35
• Extended trim package Plus	<input type="checkbox"/>	<input type="checkbox"/>	<input type="checkbox"/>	–	DHB	–
• Instrument surround in leather	<input type="checkbox"/>	<input type="checkbox"/>	<input type="checkbox"/>	–	XNG	19, 35
• Rear-view mirror in leather	<input type="checkbox"/>	<input type="checkbox"/>	<input type="checkbox"/>	–	CVW	19, 23, 35
• Air vent slats in leather ²⁾	<input type="checkbox"/>	<input type="checkbox"/>	<input type="checkbox"/>	–	CZV	19, 23, 25
• Steering column casing in leather	<input type="checkbox"/>	<input type="checkbox"/>	<input type="checkbox"/>	–	XNS	11, 23, 25
• Steering wheel rim with decorative stitching in contrasting colour	<input type="checkbox"/>	<input type="checkbox"/>	–	–	CLU	–
• PCM package in leather	<input type="checkbox"/>	<input type="checkbox"/>	<input type="checkbox"/>	–	CUR	13, 19, 35

¹⁾ EES not available for the Cayman GTS.

²⁾ Leather trim in interior colour, unless otherwise specified at the time of ordering.

Please refer to your Porsche Centre for information about leather covering in contrasting interior colours.

– not available 1 number/extra-cost option standard available at no extra cost

More detailed information on individual equipment and equipment packages can be found in the respective vehicle price list.



1



2



3

1 Rear-view mirror in leather

2 Instrument surround in leather

3 Leather interior package, dashboard and door trim packages in leather, air vent slats in leather, PCM package in leather

Option	Cayman	Cayman S	Cayman GTS	Cayman GT4	Order no.	Page
Interior: leather.						
• Gear lever personalisation package	<input type="checkbox"/>	<input type="checkbox"/>	<input type="checkbox"/>	–	CTX	–
• PDK gear selector personalisation package	<input type="checkbox"/>	<input type="checkbox"/>	<input type="checkbox"/>	–	CTL	–
• Centre console trim in leather	<input type="checkbox"/>	<input type="checkbox"/>	<input type="checkbox"/>	–	XHB	35
• Storage compartment lid with Porsche Crest	<input type="checkbox"/>	<input type="checkbox"/>	<input type="checkbox"/>	–	XPT	15, 23, 25
• Storage compartment lid with model logo	<input type="checkbox"/>	<input type="checkbox"/>	<input type="checkbox"/>	–	XUV	11, 19, 37
• Sports seats Plus backrests in leather	<input type="checkbox"/>	<input type="checkbox"/>	<input type="checkbox"/>	–	XWK	–
• Porsche Crest embossed on headrests	<input type="checkbox"/>	<input type="checkbox"/>	<input type="checkbox"/>	–	XSC	15, 23, 37
• Seat belt buckles in leather	<input type="checkbox"/>	<input type="checkbox"/>	<input type="checkbox"/>	–	CDT	15, 19, 23
• Fuse box cover in leather	<input type="checkbox"/>	<input type="checkbox"/>	<input type="checkbox"/>	–	CUJ	37
• Personalised floor mats with leather edging ¹⁾	<input type="checkbox"/>	<input type="checkbox"/>	<input type="checkbox"/>	<input type="checkbox"/>	CFX	15, 19, 23
• Inner door sill guards in leather	<input type="checkbox"/>	<input type="checkbox"/>	<input type="checkbox"/>	–	XTG	–
• Key pouch in leather	<input type="checkbox"/>	<input type="checkbox"/>	<input type="checkbox"/>	<input type="checkbox"/>	CPE	–
• Sun visors in leather	<input type="checkbox"/>	<input type="checkbox"/>	<input type="checkbox"/>	<input type="checkbox"/>	XMP	–

¹⁾ Leather trim in interior colour, unless otherwise specified at the time of ordering.
Please refer to your Porsche Centre for information about painting in contrasting exterior colours.

– not available number/extra-cost option • standard available at no extra cost
More detailed information on individual equipment and equipment packages can be found in the respective vehicle price list.



1



2



3

1 Storage compartment lid with model logo
2 Porsche Crest embossed on headrests
3 Fuse box cover in leather

Option	Cayman	Cayman S	Cayman GTS	Cayman GT4	Order no.	Page
Interior: Alcantara, mahogany¹⁾, carbon.						
• SportDesign steering wheel in Alcantara	○	○	●	–	XLK	15, 17, 39
• Sun visors in Alcantara ²⁾	○	○	○	○	XLU	–
• PDK gear selector in Alcantara	○	○	●	–	XLN	15, 17, 39
• Gear lever in Alcantara	○	○	●	●	XLM	–
• Storage compartment lid in Alcantara with 'PORSCHE' logo	○	○	○	○	XLG	39
• Storage compartment lid in Alcantara with Porsche Crest	○	○	○	○	XLJ	–
• Door trim package in leather/Alcantara	–	–	○	○	CLP	–
• Mahogany interior package	○	○	–	–	EEB/EEC/ EED/EEF	39
• Heated multifunction steering wheel in mahogany	○	○	–	–	XHF	39
• Centre console trim in mahogany	○	○	–	–	XHG	39
• Carbon interior package	○	○	○	○	EEG ³⁾ /EEH ⁴⁾ / EEJ ³⁾ /EEK ⁴⁾ / EGA ⁵⁾ /EGB ⁵⁾	11, 13, 39
• Heated multifunction steering wheel in carbon	○	○	○	–	XHL	11, 13
• Centre console trim in carbon	○	○	○	○	XHM	11, 13, 39
• Gear lever in carbon	–	–	○	–	EHH	–
• PDK gear selector in carbon	–	–	○	–	EHJ	11, 13

¹⁾ Since wood is a natural product, there may be variations in colour and grain.

²⁾ Available from 06/2015 at the earliest.

³⁾ EEG and EEJ not available for the Cayman GT4.

⁴⁾ EEH and EEK not available for the Cayman GTS and Cayman GT4.

⁵⁾ EGA and EGB not available for the Cayman GT4.



1



2



3

1 Carbon interior package, centre console trim in carbon, SportDesign steering wheel in Alcantara, PDK gear selector in Alcantara

2 Storage compartment lid in Alcantara with 'PORSCHE' logo

3 Mahogany interior package, heated multifunction steering wheel in mahogany, centre console trim in mahogany

Option	Cayman	Cayman S	Cayman GTS	Cayman GT4	Order no.	Page
Interior: aluminium, stainless steel.						
• Brushed aluminium interior package	<input type="checkbox"/>	<input type="checkbox"/>	<input type="checkbox"/>	<input checked="" type="checkbox"/>	EEL ¹⁾ /EEM ²⁾ / EEN ¹⁾ /EEP ²⁾ / EGC ³⁾ /EGD ³⁾	19, 41
• PDK gear selector in aluminium	<input type="checkbox"/>	<input type="checkbox"/>	<input type="checkbox"/>	<input type="checkbox"/>	XYA	41
• Centre console trim in brushed aluminium	<input type="checkbox"/>	<input type="checkbox"/>	<input type="checkbox"/>	<input checked="" type="checkbox"/>	XYE	19, 21, 41
• Pedals and footrest in aluminium	<input type="checkbox"/>	<input type="checkbox"/>	<input type="checkbox"/>	<input type="checkbox"/>	EFA	16, 41

¹⁾ EEL and EEN not available for the Cayman GT4.

²⁾ EEM and EEP not available for the Cayman GTS and Cayman GT4.

³⁾ EGC and EGD not available for the Cayman GT4.

– not available number/extra-cost option standard available at no extra cost

More detailed information on individual equipment and equipment packages can be found in the respective vehicle price list.



1



2



3

1 Brushed aluminium interior package,

centre console trim in brushed aluminium

2 PDK gear selector in aluminium

3 Pedals and footrest in aluminium

Option	Cayman	Cayman S	Cayman GTS	Cayman GT4	Order no.	Page
Door sill guards.						
• Door sill guards in carbon	<input type="checkbox"/>	<input type="checkbox"/>	<input type="checkbox"/>	–	X69	43
• Door sill guards in carbon, illuminated	<input type="checkbox"/>	<input type="checkbox"/>	<input type="checkbox"/>	<input type="checkbox"/>	XXD	43
• Personalised door sill guards in carbon, illuminated	<input type="checkbox"/>	<input type="checkbox"/>	<input type="checkbox"/>	<input type="checkbox"/>	CXE	–
• Door sill guards in stainless steel	<input type="checkbox"/>	<input type="checkbox"/>	<input type="checkbox"/>	–	X70	43
• Door sill guards in stainless steel, illuminated	<input type="checkbox"/>	<input type="checkbox"/>	<input type="checkbox"/>	<input type="checkbox"/>	XXB	21, 43
• Personalised door sill guards in stainless steel, illuminated	<input type="checkbox"/>	<input type="checkbox"/>	<input type="checkbox"/>	<input type="checkbox"/>	CXC	–



1



2



3



4

- 1 Door sill guards in carbon
- 2 Door sill guards in carbon, illuminated
- 3 Door sill guards in stainless steel
- 4 Door sill guards in stainless steel, illuminated

– not available 1 number/extra-cost option standard available at no extra cost
 More detailed information on individual equipment and equipment packages can be found in the respective vehicle price list.

Exclusive expertise

When was the last time your dream became reality?

What better way could there be to make a Porsche even more special than to add your own personal touch? This has been the philosophy behind the Porsche 'Sonderwunsch programme', known as Porsche Exclusive, since 1986. You can have your vehicle individually tailored to your unique requirements even before it leaves the factory. Handcrafted visual and technical enhancements for the

interior and exterior, using fine materials and with customary Porsche quality. The possibilities are as varied as your imagination allows.

At Porsche Exclusive, we create truly special cars and genuinely limited-edition production runs with an intense passion for detail and a focus on quality craftsmanship. Our ever constant goal is to ensure that each and every Porsche car is exceptional,

with its own distinctive personality and character. Our latest example: the Panamera Exclusive Series.

On the following pages, we showcase 11 extraordinary Porsche models. All limited editions, they epitomise the principle on which Porsche Exclusive is founded: exclusive expertise. Every vehicle created by Porsche Exclusive is unique and lives up to our claim and motto 'Ultimate personalisation'.

1983

1992 to 1993

1993

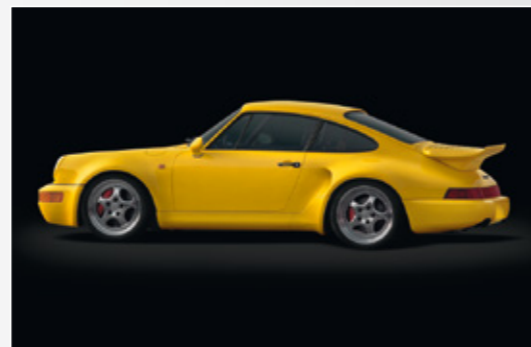
1993 to 1994

1995



935 Street

As a one-off in 1983, Porsche built a street-legal version of the type 935 racing car. The combination of power and luxury made the 935 Street unique in its time.



911 Turbo S Lightweight

In 1992 and 1993, the 911 Turbo S Lightweight was the highlight of the Porsche model range. Thanks to a purposefully weight-saving construction, each one of the 86 exclusive models delivered extraordinary performance.



911 Carrera 2 Speedster Turbolook

In 1993, Porsche realised an exclusive customer dream: 15 cars of the then brand-new 911 Carrera 2 Speedster were given the prestigious Turbolook by Porsche Exclusive. The brake system of the 911 Turbo was also available as an option.



911 Turbo Flatnose

A stand-out feature of the 964 series, the 911 Turbo Coupé was available in Flatnose design. Production ran from 1993 to 1994. The Flatnose makeover was limited to 76 models and, in addition to other style modifications, many of these were given an uprated turbo engine.



911 Turbo Cabriolet

A Porsche Exclusive special for sun-loving and power-hungry customers, a limited number of the 911 Turbo were produced in Cabriolet form. The combination of fresh air and turbo performance was available to just 14 customers.

1995 to 2000



911 Carrera Speedster

One of the rarest Porsche cars ever, the 911 Carrera Speedster was based on the 911 (type 993). Only two were made in 1995 and 2000.

1997 to 1998



911 Turbo S

With the 911 Turbo S manufactured from 1997 to 1998, the Porsche Exclusive tradition of small-scale production reached its high point but also its climax for the time being. The 993 Turbo S, of which 345 vehicles were made, was the only model in the series to achieve a top speed of 300 km/h.

2009 to 2010



911 Sport Classic

This small-scale production run from 2009 to 2010 blended the traditional with the modern to create a typical Porsche work of art. The 911 Sport Classic with a double-dome roof, 'ducktail' and 19-inch Sport Classic wheels with the traditional styling of Fuchs wheels was limited to 250 cars.

2010 to 2011



911 Speedster

Produced in a limited quantity of 356 from 2010 to 2011, the 911 Speedster not only impressed with its handcrafted, personalised interior, it distinguished itself visually from all other members of the 911 family, thanks to its shorter windscreen frame, rear apron with side air outlets and dynamically styled Speedster hood compartment lid with two muscular haunches.

2012



911 Club Coupé

The first two Porsche Clubs comprised 13 members. That was 60 years ago. Since then, that number has grown to 651 globally recognised Porsche Clubs with around 186,000 members. A unique sports car was created in 2012 to honour the first club charters: the 911 Club Coupé – with a strictly limited edition of just 13 cars.

2014 to 2015



Panamera Exclusive Series

In 2014 and 2015 Porsche Exclusive produced the Panamera Exclusive Series, a limited edition of 100 cars based on the Panamera Turbo S Executive. Its impressive features include an exquisite leather interior by Poltrona Frau, a beautiful blended paint finish, a badge showing the limited edition number and the new Porsche Rear Seat Entertainment Plus.

Designing your Porsche

Porsche Exclusive.
What else is exclusive to each and every car? Exclusive advice.

Everything starts with the right advice and your exclusive wishes and requirements. We offer personal support and individual expert advice to each and every customer. So why wait? Make an appointment with your Porsche Centre to discuss your requirements. Or contact our Porsche Exclusive Customer Centre in Zuffenhausen directly by e-mailing customercenter-exclusive@porsche.de or calling +49 711 911-25977.

You can see what we really mean by customisation at our Porsche Exclusive Customer Centres in Zuffenhausen and Leipzig. Here, you can select the materials, such as leather, wood or aluminium, the paint finishes that you desire and plan your own Porsche using the Porsche Car Configurator.

We want to show you what we can do and experience how we make customer requirements into reality, here, directly on site. All down to the smallest detail, just as you would expect from Porsche Exclusive.



The Porsche new vehicle warranty applies to all Porsche Exclusive options and special designs. Please appreciate that some Porsche Exclusive options may require a longer delivery lead time.

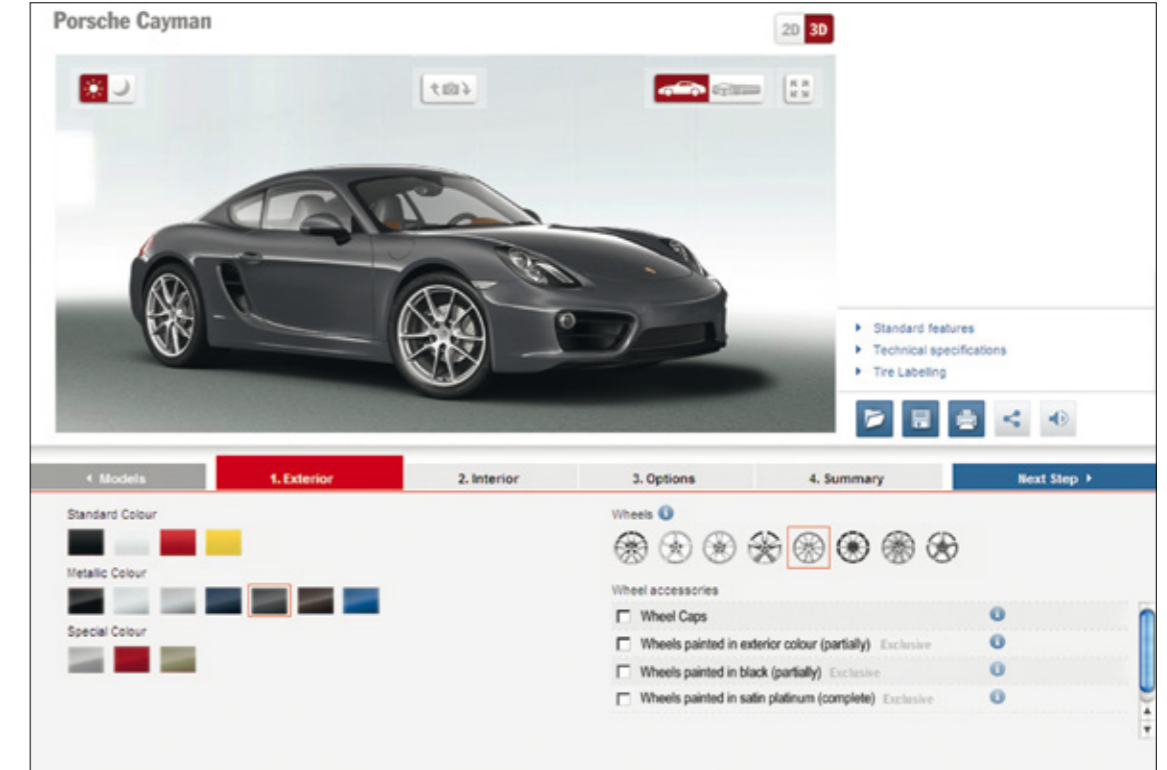
Porsche Car Configurator

The Cayman: great potential for cornering – and in design.

Taste, personality and style. You decide how to refine the Cayman to your personal preference. With the Porsche Car Configurator, you can see the result instantly on your computer. Create a Cayman of your own in just four easy steps.

An interactive 3D tool then lets you see it from the inside and the outside, by day and by night. You can save your configuration and print it out directly.

At www.porsche.com you will find the Porsche Car Configurator and lots more about the captivating power of Porsche.



Panorama



Porsche Centres

Your Porsche Centre can assist you with every aspect of purchasing and owning your Porsche. You will also find a wide range of products and services, including genuine Porsche parts and top-quality accessories.



Porsche Tequipment

Personalise your Porsche at any time after purchase with our range of aftermarket accessories. You will also find all our available products online at www.porsche.com/tequipment using the Tequipment accessories finder.



Porsche Driver's Selection

With products ranging from fashion and accessories to tailored luggage, this unique collection combines quality and style with everyday practicality.



Porsche Travel Club

Embark on a thrilling adventure and feel the power of Porsche. Stay in top-class hotels and dine in five-star restaurants. Worldwide. To find out more, call +49 711 911-23360. E-mail: info@porschetravelclub.de



Porsche Sport Driving School

Develop your skill and explore your Porsche with the Porsche Sport Driving School. Learn about events at some of the world's most famous racing venues, call +49 711 911-23364. E-mail: info@porscheporstdrivingsschool.de



Porsche Clubs

Since the first Porsche Club was founded in 1952, their number has grown to 651 with a total of 186,000 members worldwide. To find out more, go to www.porsche.com/clubs or call +49 711 911-23250.



Porsche Service

Your expert partner for all current Porsche models as well as old and modern classics, whether your car needs servicing, routine care or special repairs.

Porsche Assistance

Enjoy peace of mind with our exclusive breakdown and accident recovery service. Membership is free when you buy a new Porsche.

Porsche Approved

So that our vehicles remain reliable and retain their value whether new or previously owned, all Porsche Approved cars meet the most stringent Porsche quality standards across the world. Each car is backed by the Porsche Approved warranty.

Porsche Financial Services

Our range of financial services is innovative and specially tailored to the needs of Porsche owners. Products range from attractive finance and leasing options to vehicle insurance and the Porsche Card.

Christophorus

Published five times a year, our magazine for Porsche owners offers news, interviews and a variety of features from throughout the world of Porsche. Visit www.porsche.com/christophorus for a selection of online articles.

Porsche Classic

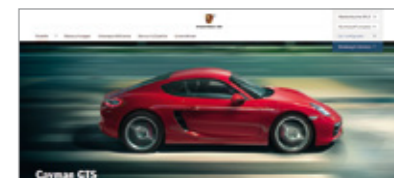
Your specialist source for genuine Porsche parts as well as restoration services for all Porsche classics. Visit www.porsche.com/classic to find out more.

Porsche Museum

More than 80 vehicles at our headquarters in Stuttgart-Zuffenhausen await to take you on a journey through Porsche history. See icons such as the 356, 911 and 917 presented in an atmosphere you can't experience anywhere else.

Porsche Online

Go to www.porsche.com for all the latest news and information from Porsche.



You can obtain the latest brochures for Porsche Tequipment, Porsche Driver's Selection and Porsche Driving Experience from your Porsche Centre.

Fuel consumption figures

The Cayman models	Cayman	Cayman S	Cayman GTS	Cayman GT4
Fuel consumption/emissions	Manual/PDK	Manual/PDK	Manual/PDK	Manual
Urban (in l/100 km)	11.8/10.9	12.7/11.4	12.7/11.4	14.8
Extra urban (in l/100 km)	6.4/6.2	7.1/6.3	7.1/6.3	7.8
Combined (in l/100 km)	8.4/7.9	9.0/8.2	9.0/8.2	10.3
CO ₂ emissions (in g/km)	195/183	211/190	211/190	238
Efficiency class	Manual/PDK	Manual/PDK	Manual/PDK	Manual
Germany	G/F	G/F	G/F	G
Switzerland	G/G	G/G	G/G	G

Tyre identification

Tyre type	Tyre designation	Fuel efficiency class/ rolling resistance	Wet grip class	External rolling noise* (class)	External rolling noise (dB)
Cayman/Cayman S/Cayman GTS					
Summer tyres	235/45 ZR 18	E	C	–	69–68
	265/45 ZR 18	E	C–B		69
	235/40 ZR 19	E	B–A	–	71–68
	265/40 ZR 19	E	B–A		72–70
	235/35 ZR 20	F–E	C–A		72.3–71
	265/35 ZR 20	E	C–A	–	73.9–72
Cayman GT4					
Summer tyres	245/35 ZR 20	F	C–A		70–69
	295/30 ZR 20	F–E	C		73

For logistical and technical reasons relating to the production process, we are unable to accept orders for a particular make of tyre.
 * Quiet rolling noise. Moderate rolling noise. Loud rolling noise.

